



RIDGEWOOD

PUBLIC SCHOOLS



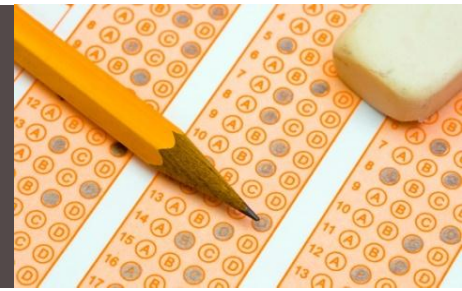
District-Wide State Testing Report: 2011-2012

Regina Lemerich Botsford

Assistant Superintendent for Curriculum, Instruction and Assessment

December 2012

STATE TESTING 2012



- Criterion-referenced tests required by the state administered in Spring, 2012
 - Grade 3: *NJASK* in Language Arts Literacy and Mathematics
 - Grade 4: *NJASK* in Language Arts Literacy, Mathematics, and Science
 - Grades 5, 6, 7: *NJASK* in Language Arts Literacy and Mathematics
 - Grade 8: *NJASK* in Language Arts Literacy, Mathematics, and Science
 - Grade 11: *HSPA* in Language Arts Literacy and Mathematics
 - End of Course: *NJBCT* New Jersey Biology Competency Test. Postponed as a graduation requirement

- Multiple-choice and open-ended items

- Percent Passing = Percent Advanced Proficient + Percent Proficient

- Different test questions each year → level of difficulty varies

- Different students every year → level of performance varies

DISTRICT FACTOR GROUP INFORMATION



- The DFG is based on population density, the percent of individuals in poverty, as well as residents' education level, occupational status, unemployment rate, and median family income.
- Our DFG changed from I to J in 2005.
- New Jersey has 25 J districts.
- Other J districts: Glen Rock, HoHoKus, Northern Highlands, Saddle River, Upper Saddle River, Woodcliff Lake, Millburn, West Windsor-Plainsboro, Rumson, Chatham, Mountain Lakes.
- Ridgewood is the second largest J district in New Jersey.

Most informative comparison is to District Factor Group results.
NJDOE also requires comparison to state results.

NJDOE DATA REPORTING



Currently, NJDOE reports three sets of data:

<u>Report Title</u>	<u>Student Population</u>
1. NJASK Performance by Demographic Group*	1. All students, including out-of-district placements
2. NCLB Report	2. All students, including out-of-district placements, but minus students in the district less than 1 year
3. NJDOE School Report Card	3. All students attending that school, regardless of length of time; does not include out-of-district placements or students attending a district school other than their school of residence

*NJASK Performance by Demographic Group data, including all district and out-of-district students, are used in this report. As a result, there may be small differences between data presented in this report and other NJDOE reports. Typically such differences are less than .5 of one percentage point.

TWO ESSENTIAL QUESTIONS

- How did we do relative to our comparison group?
- How are we doing over time?



NJASK3

HISTORY RELATIVE TO DFG J AND STATE PERCENT OF ALL STUDENTS IN EACH PROFICIENCY LEVEL



	Language Arts Literacy			Mathematics		
	Advanced Proficient	Proficient	Partially Proficient	Advanced Proficient	Proficient	Partially Proficient
2012 NJASK3						
Ridgewood	11.2	76.5	12.3	71.3	24.8	3.9
DFG J	9.2	79.4	11.4	64.6	30.1	5.3
State	3.6	63.1	33.2	37.1	41.3	21.6
2011 NJASK3						
Ridgewood	25.1	63.1	11.8	72.5	24.1	3.4
DFG J	17.5	67.4	15.1	64.4	29.7	5.8
State	7.2	55.8	37.0	38.4	40.5	21.1
2010 NJASK3						
Ridgewood	15.1	73.0	11.9	63.3	30.5	6.2
DFG J	13.9	68.3	17.8	62.1	31.1	6.8
State	5.6	54.1	40.3	37.1	41.0	21.9
2009 NJASK3						
Ridgewood	12.7	75.3	12.0	55.5	38.2	6.3
DFG J	14.0	72.0	14.0	53.7	38.4	7.9
State	5.8	56.9	37.3	31.9	43.3	24.8
2008 NJASK3						
Ridgewood	12.9	83.7	3.3	52.2	45.2	2.6
DFG J	11.5	84.6	3.9	54.0	42.2	3.9
State	4.6	81.4	14.0	33.3	53.4	13.3
2007 NJASK3						
Ridgewood	20.6	77.1	2.3	57.7	40.5	1.8
DFG J	18.1	77.3	4.6	53.2	43.8	3.0
State	8.2	75.2	16.6	32.3	55.0	12.7

- *Bolded "Advanced Proficient" percentages are equal to or higher than DFG J.*
- *Bolded "Partially Proficient" percentages are equal to or lower than DFG J.*

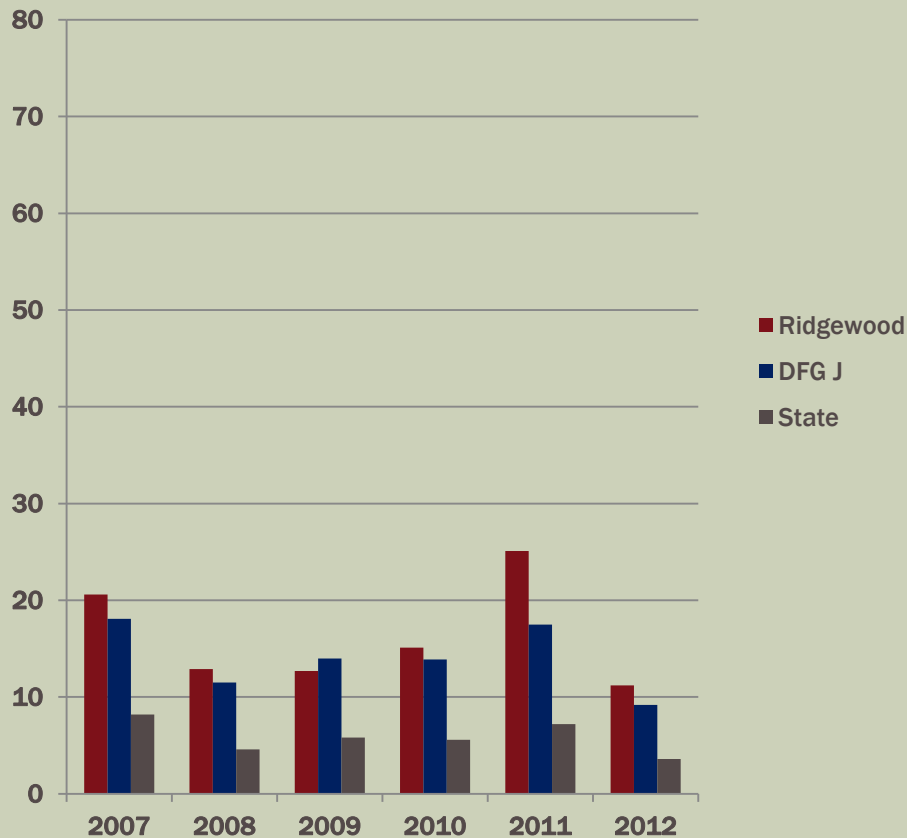
NJASK3

HISTORY RELATIVE TO DFG J AND STATE

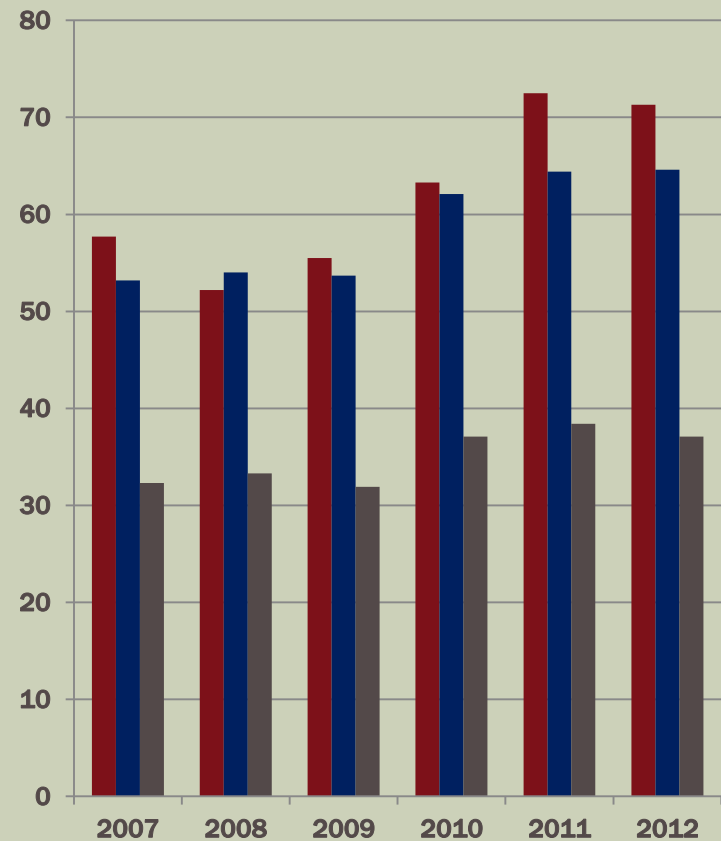
ALL STUDENTS

Percent Advanced Proficient

Language Arts Literacy



Mathematics

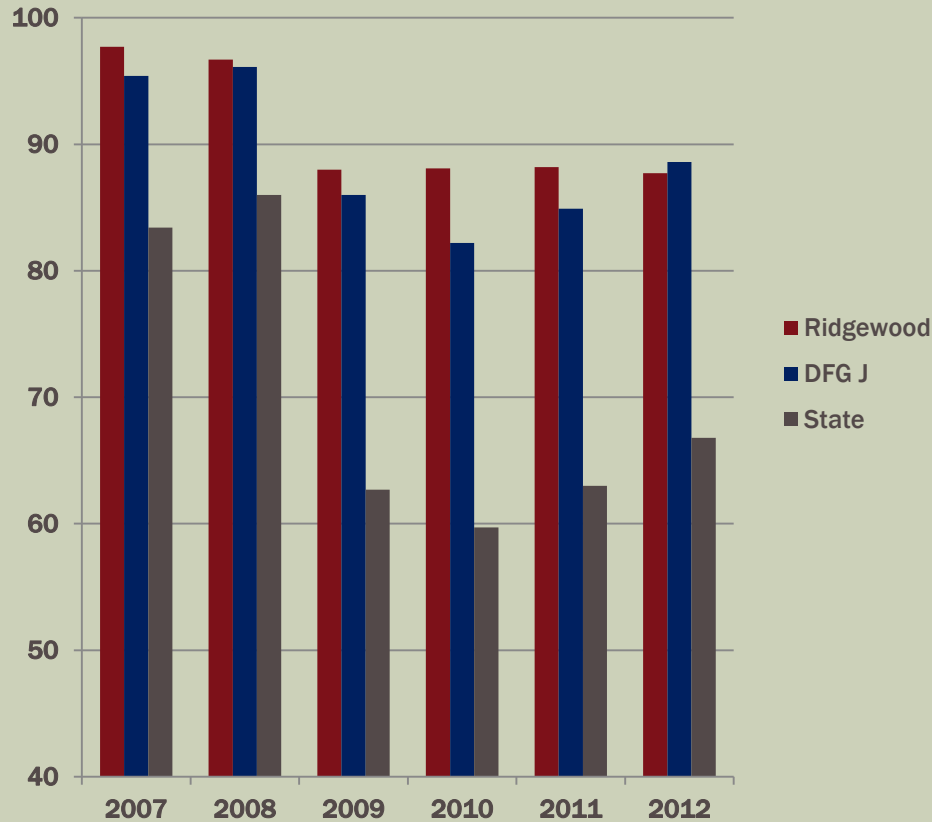


NJASK3

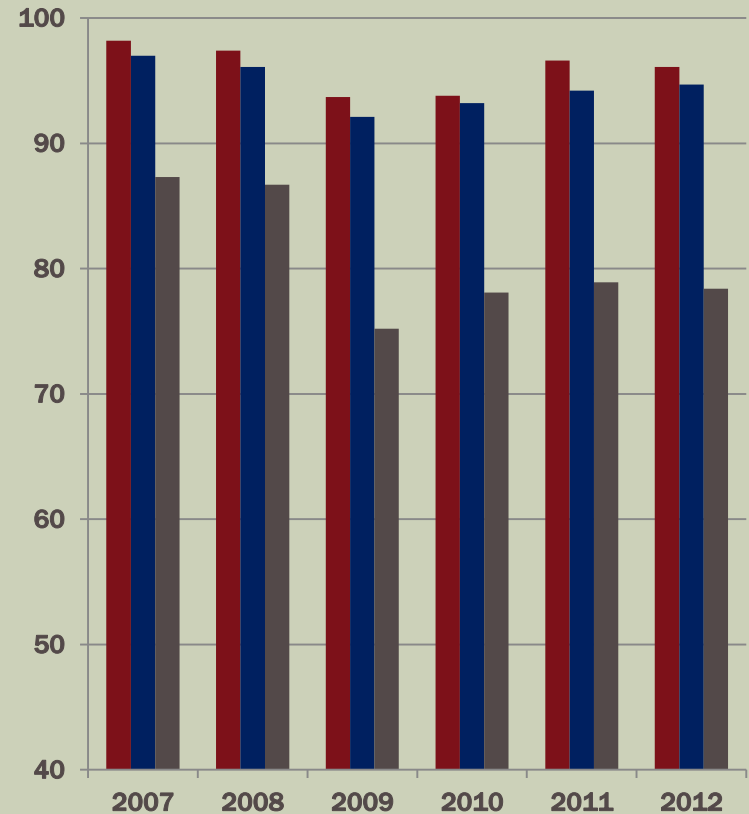
HISTORY RELATIVE TO DFG J AND STATE ALL STUDENTS

Percent Passing

Language Arts Literacy



Mathematics



NJASK4

HISTORY RELATIVE TO DFG J AND STATE PERCENT OF ALL STUDENTS IN EACH PROFICIENCY LEVEL



	Language Arts Literacy				Mathematics		
	Advanced Proficient	Proficient	Partially Proficient		Advanced Proficient	Proficient	Partially Proficient
2012 NJASK4							
Ridgewood	13.9	74.5	11.6		68.1	28.8	3.1
DFG J	11.3	72.3	16.3		60.2	33.5	6.3
State	4.0	54.5	41.5		33.1	44.3	22.6
2011 NJASK4							
Ridgewood	20.9	68.1	11.0		66.4	30.7	2.9
DFG J	17.2	67.8	15.0		55.4	38.7	6.0
State	7.2	55.5	37.3		32.1	47.2	20.7
2010 NJASK4							
Ridgewood	20.3	66.9	12.9		59.8	35.2	5.0
DFG J	21.2	63.1	15.8		58.7	34.7	6.6
State	9.3	50.3	40.4		34.8	42.2	23.0
2009 NJASK4							
Ridgewood	21.9	66.7	11.5		54.6	40.1	5.3
DFG J	16.3	69.2	14.5		49.5	40.5	9.9
State	6.7	56.3	37.0		27.5	45.4	27.0
2008 NJASK4							
Ridgewood	8.4	88.2	3.4		67.6	29.9	2.5
DFG J	9.8	84.5	5.7		62.0	33.9	4.1
State	4.6	78.0	17.4		40.4	44.4	15.2
2007 NJASK4							
Ridgewood	19.9	76.9	3.2		65.2	32.0	2.8
DFG J	14.6	80.4	5.0		64.6	31.9	3.5
State	6.7	73.9	19.4		41.0	43.7	15.3

- *Bolded "Advanced Proficient" percentages are equal to or higher than DFG J.*
- *Bolded "Partially Proficient" percentages are equal to or lower than DFG J.*

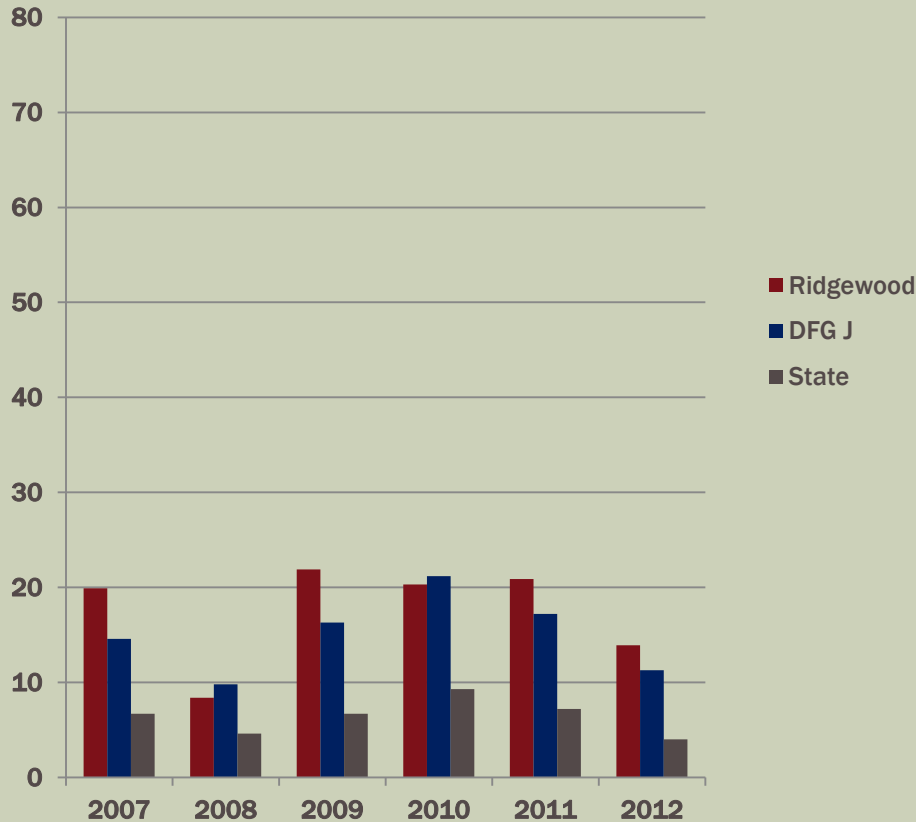
NJASK4

HISTORY RELATIVE TO DFG J AND STATE

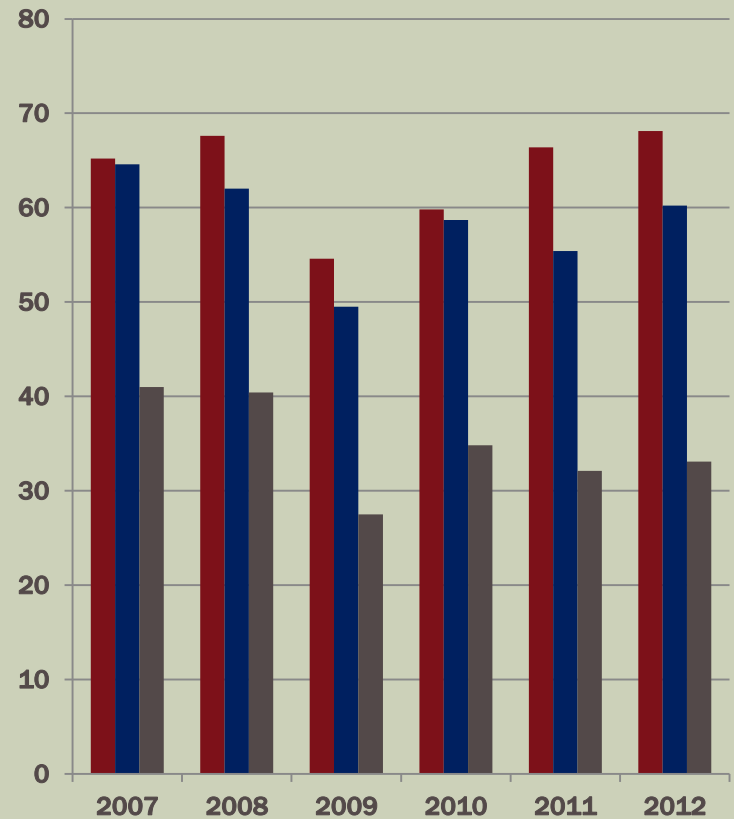
ALL STUDENTS

Percent Advanced Proficient

Language Arts Literacy



Mathematics

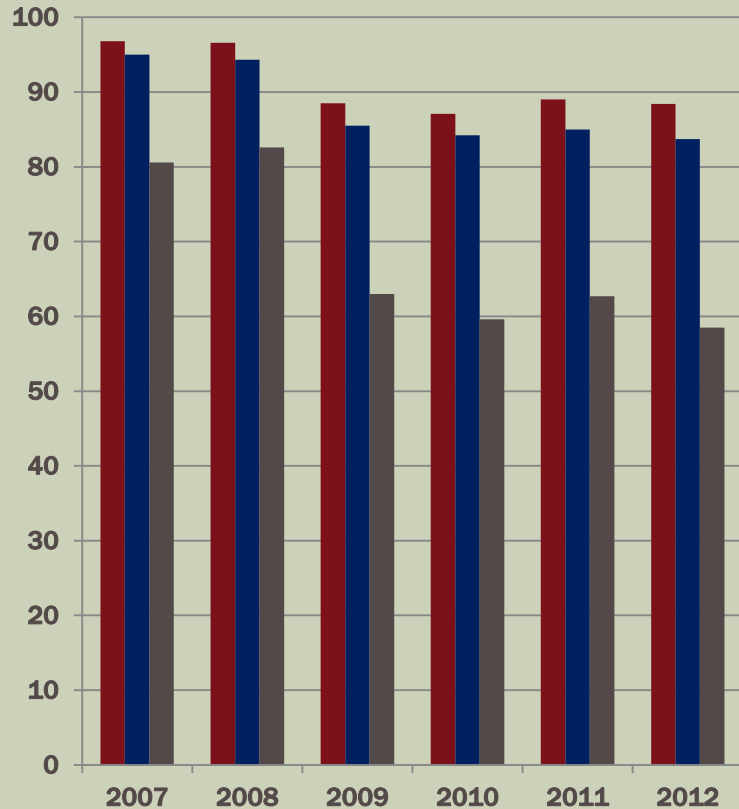


NJASK4

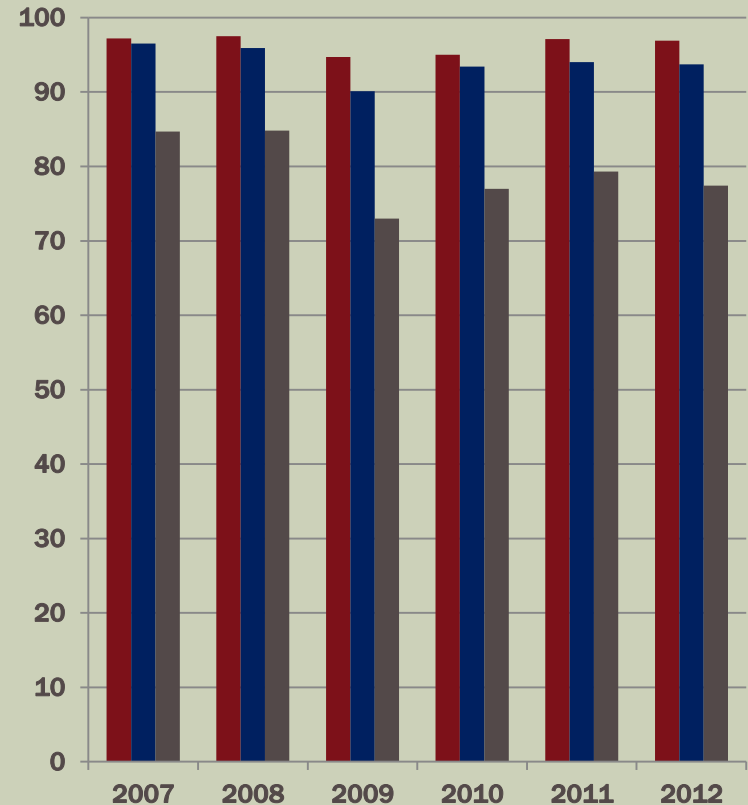
HISTORY RELATIVE TO DFG J AND STATE ALL STUDENTS

Percent Passing

Language Arts Literacy



Mathematics



NJASK5

HISTORY RELATIVE TO DFG J AND STATE PERCENT OF ALL STUDENTS IN EACH PROFICIENCY LEVEL



	Language Arts Literacy				Mathematics		
	Advanced Proficient	Proficient	Partially Proficient		Advanced Proficient	Proficient	Partially Proficient
2012 NJASK 5							
Ridgewood	20.0	67.4	12.6		73.0	24.8	2.2
DFG J	17.5	68.3	14.2		67.2	28.7	4.1
State	6.6	55.5	37.9		37.4	45.9	16.8
2011 NJASK5							
Ridgewood	22.7	67.8	9.5		75.0	21.9	3.1
DFG J	17.2	69.7	13.2		68.3	27.7	4.0
State	6.1	54.8	39.1		39.5	41.1	19.4
2010 NJASK5							
Ridgewood	27.2	62.7	10.2		64.8	29.7	5.5
DFG J	24.3	62.8	12.9		64.6	30.1	5.3
State	8.7	54.3	36.9		36.8	42.0	21.3
2009 NJASK5							
Ridgewood	26.4	64.9	8.7		64.8	30.3	4.9
DFG J	23.0	65.5	11.5		58.6	34.4	7.0
State	8.7	57.1	34.2		32.1	45.3	22.7
2008 NJASK5							
Ridgewood	9.2	78.4	12.4		50.4	44.0	5.6
DFG J	10.9	74.6	14.5		49.7	43.3	7.0
State	4.1	55.8	40.1		27.8	48.6	23.5
2007 NJASK5							
Ridgewood	29.6	69.5	0.9		47.7	50.1	2.2
DFG J	26.9	71.3	1.8		51.4	43.9	4.7
State	12.9	75.9	11.2		29.4	54.7	15.8

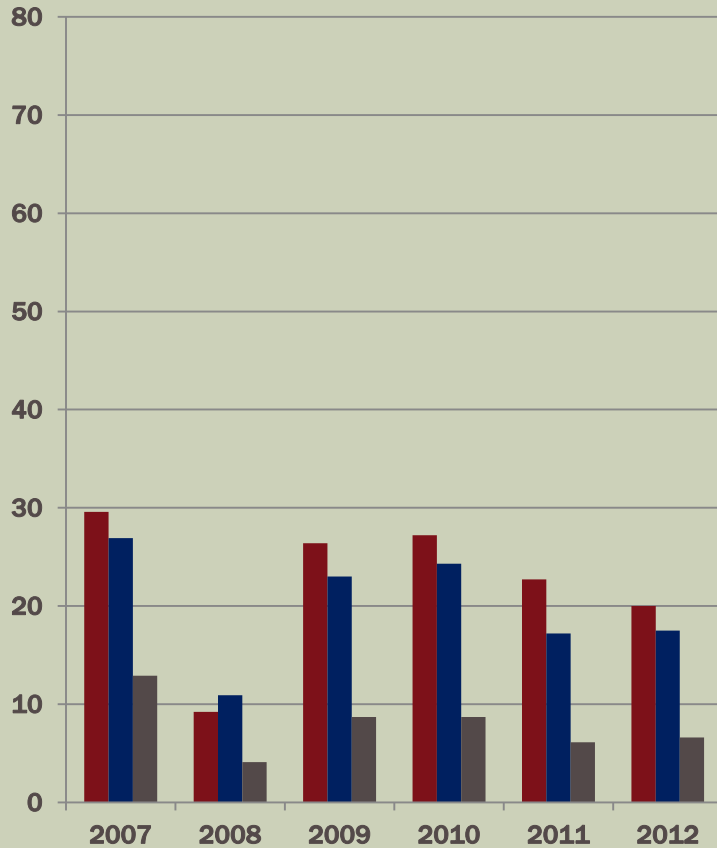
- *Bolded "Advanced Proficient" percentages are equal to or higher than DFG J.*
- *Bolded "Partially Proficient" percentages are equal to or lower than DFG J.*

NJASK5

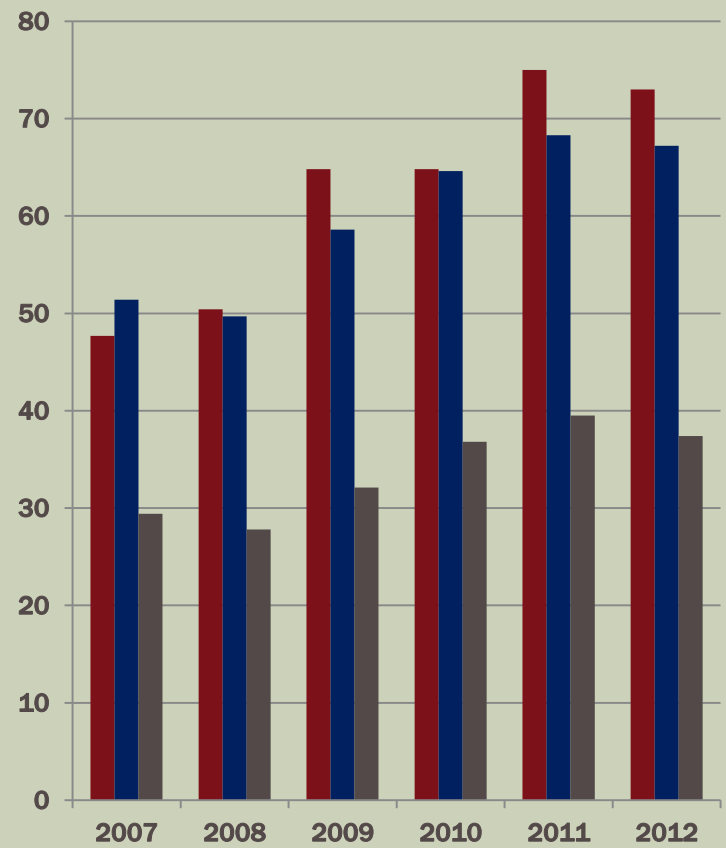
HISTORY RELATIVE TO DFG J AND STATE ALL STUDENTS

Percent Advanced Proficient

Language Arts Literacy



Mathematics

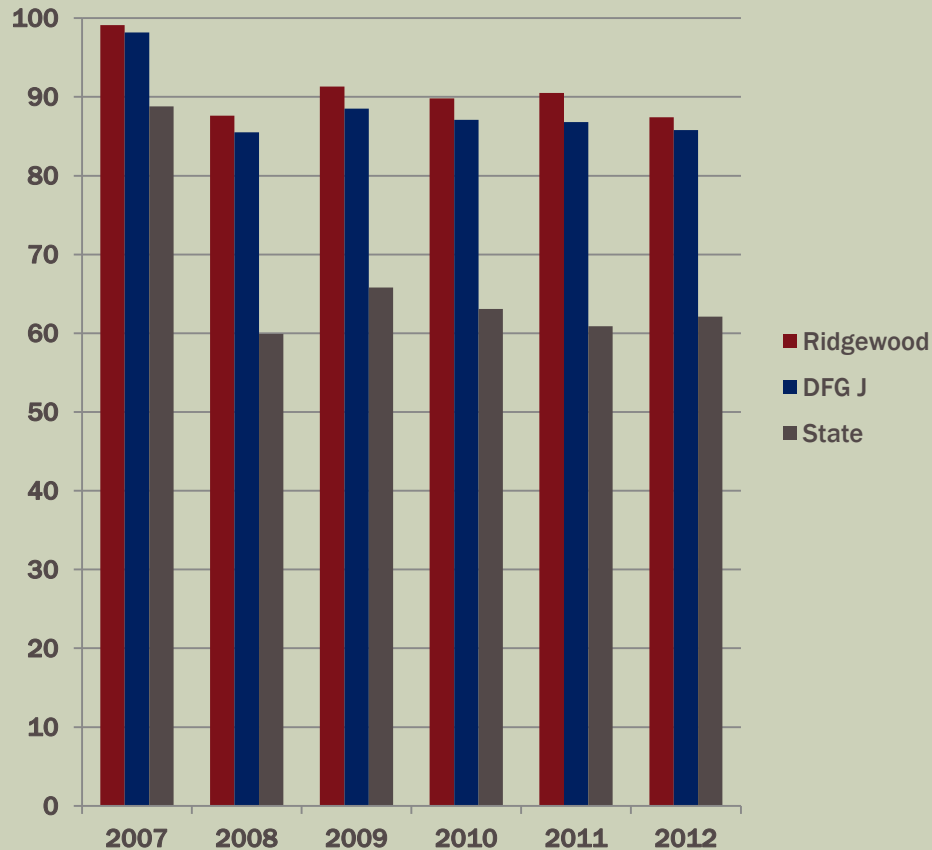


NJASK5

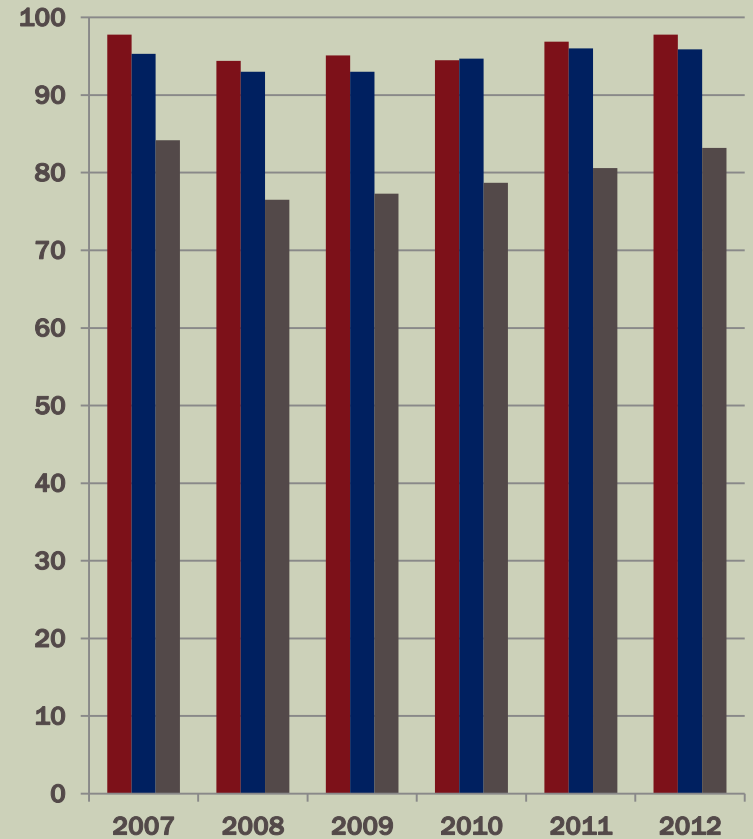
HISTORY RELATIVE TO DFG J AND STATE ALL STUDENTS

Percent Passing

Language Arts Literacy

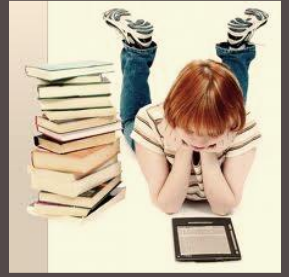


Mathematics



NJASK6

HISTORY RELATIVE TO DFG J AND STATE PERCENT OF ALL STUDENTS IN EACH PROFICIENCY LEVEL



	Language Arts Literacy			Mathematics		
	Advanced Proficient	Proficient	Partially Proficient	Advanced Proficient	Proficient	Partially Proficient
2012 NJASK6						
Ridgewood	15.7	72.2	12.1	61.1	33.1	5.7
DFG J	18.4	72.5	9.2	62.1	33.2	4.7
State	6.1	58.4	35.5	32.2	46.6	21.2
2011 NJASK6						
Ridgewood	16.4	73.3	10.2	55.8	40.0	4.2
DFG J	19.1	70.1	10.8	54.2	40.2	5.6
State	7.3	59.4	33.3	27.6	49.8	22.7
2010 NJASK6						
Ridgewood	18.4	71.3	10.2	50.2	42.7	7.1
DFG J	21.8	67.4	10.8	48.7	42.9	8.5
State	7.6	57.7	34.7	23.5	48.3	28.2
2009 NJASK6						
Ridgewood	14.4	75.9	9.7	46.8	46.3	6.9
DFG J	16.7	74.8	8.5	48.5	43.2	8.3
State	7.2	62.6	30.2	25.3	45.6	29.1
2008 NJASK6						
Ridgewood	4.6	78.2	17.2	39.3	55.5	5.3
DFG J	6.0	77.7	16.3	42.2	50.3	7.6
State	2.4	54.8	42.9	20.0	52.0	28.0
2007 NJASK6						
Ridgewood	25.1	67.8	7.1	35.2	58.2	6.6
DFG J	28.7	65.5	5.8	40.7	53.2	6.1
State	12.7	63.1	24.2	19.0	60.0	21.0

- *Bolded "Advanced Proficient" percentages are equal to or higher than DFG J.*
- *Bolded "Partially Proficient" percentages are equal to or lower than DFG J.*

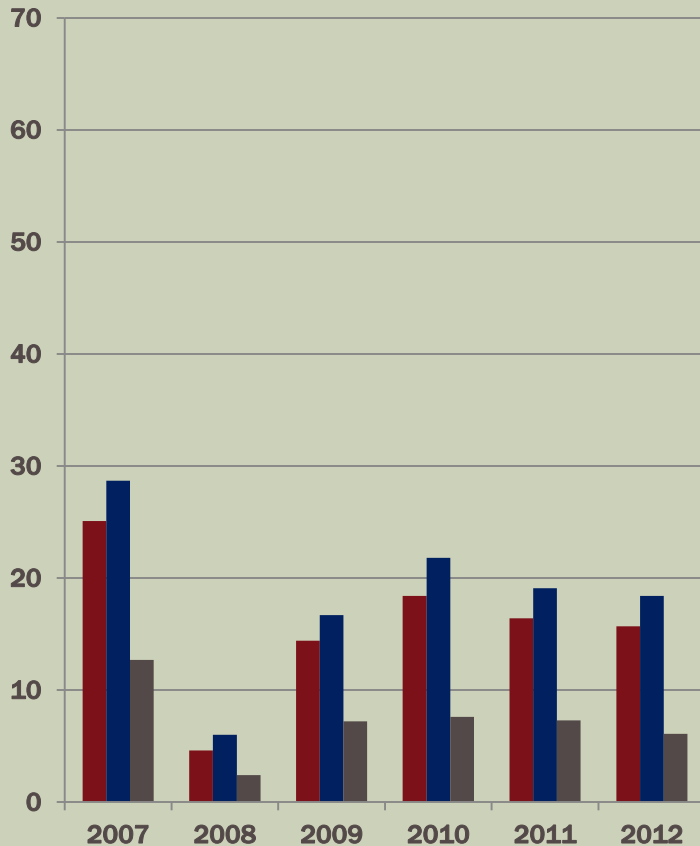
NJASK6

HISTORY RELATIVE TO DFG J AND STATE

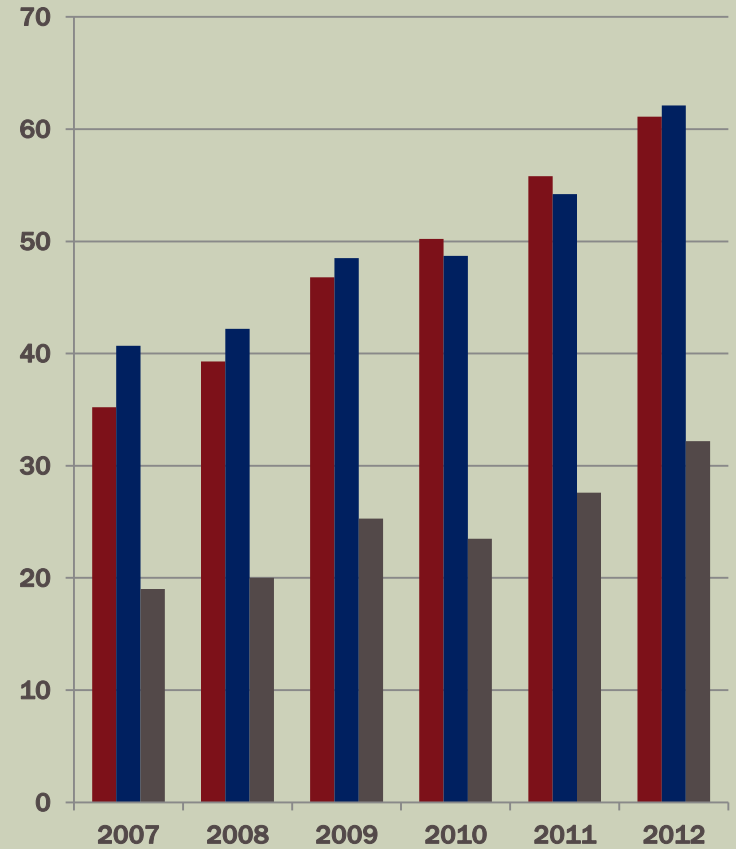
ALL STUDENTS

Percent Advanced Proficient

Language Arts Literacy



Mathematics



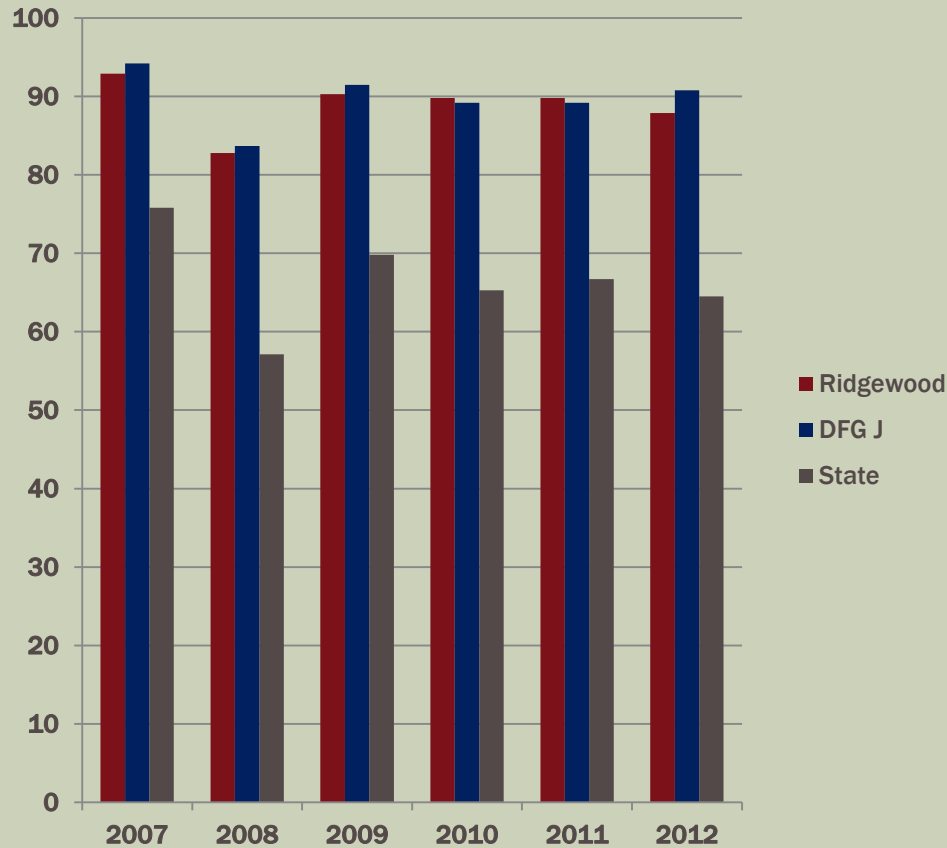
NJASK6

HISTORY RELATIVE TO DFG J AND STATE

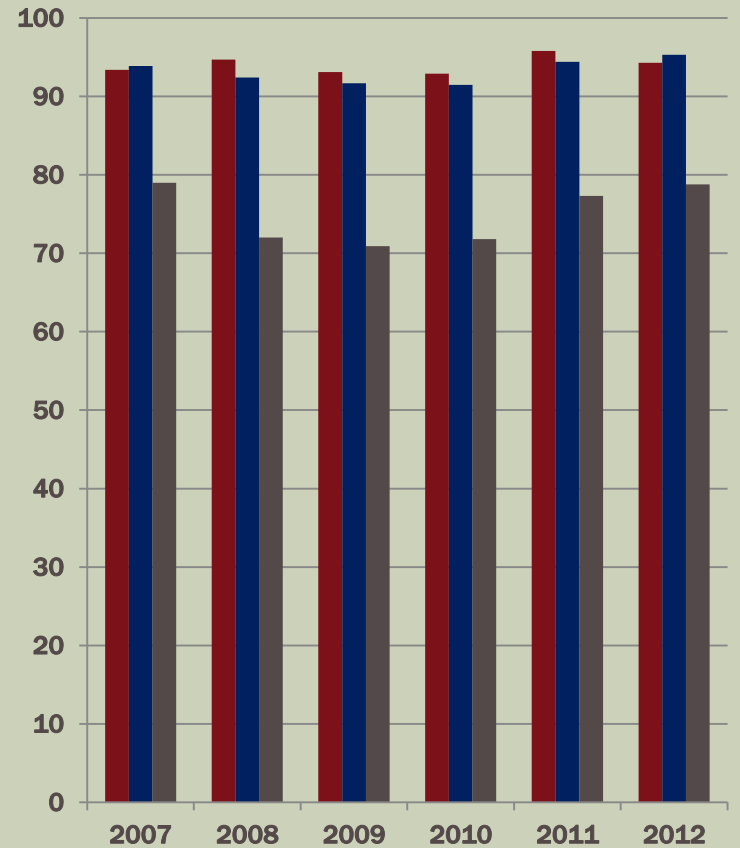
ALL STUDENTS

Percent Passing

Language Arts Literacy



Mathematics



NJASK7

HISTORY RELATIVE TO DFG J AND STATE PERCENT OF ALL STUDENTS IN EACH PROFICIENCY LEVEL



	Language Arts Literacy				Mathematics		
	Advanced Proficient	Proficient	Partially Proficient		Advanced Proficient	Proficient	Partially Proficient
2012 NJASK7							
Ridgewood	25.3	63.4	11.3		45.7	44.8	9.6
DFG J	28.6	60.0	11.5		51.3	37.7	11.0
State	10.5	50.5	39.0		22.9	40.3	36.8
2011 NJASK7							
Ridgewood	27.1	62.8	10.1		49.3	41.0	9.7
DFG J	30.9	57.3	11.8		51.8	36.5	11.7
State	12.3	51.0	36.7		24.3	41.4	34.3
2010 NJASK7							
Ridgewood	31.2	59.3	9.5		44.5	42.1	13.3
DFG J	40.2	52.2	7.6		49.2	39.5	11.3
State	17.5	51.7	30.8		24.4	39.9	35.7
2009 NJASK7							
Ridgewood	41.4	52.9	5.6		49.8	40.8	9.4
DFG J	42.3	50.8	6.9		48.5	39.9	11.6
State	18.2	53.7	28.1		23.7	42.6	33.7
2008 NJASK7							
Ridgewood	28.7	61.5	9.9		34.6	48.1	17.3
DFG J	35.5	57.2	7.3		43.1	44.4	12.4
State	14.7	55.7	29.7		19.8	44.5	35.7
2007 NJASK7							
Ridgewood	22.6	70.8	6.6		25.7	60.8	13.6
DFG J	28.0	67.3	4.7		36.1	51.9	12.0
State	12.3	67.8	19.9		15.8	50.5	33.7

- *Bolded "Advanced Proficient" percentages are equal to or higher than DFG J.*
- *Bolded "Partially Proficient" percentages are equal to or lower than DFG J.*

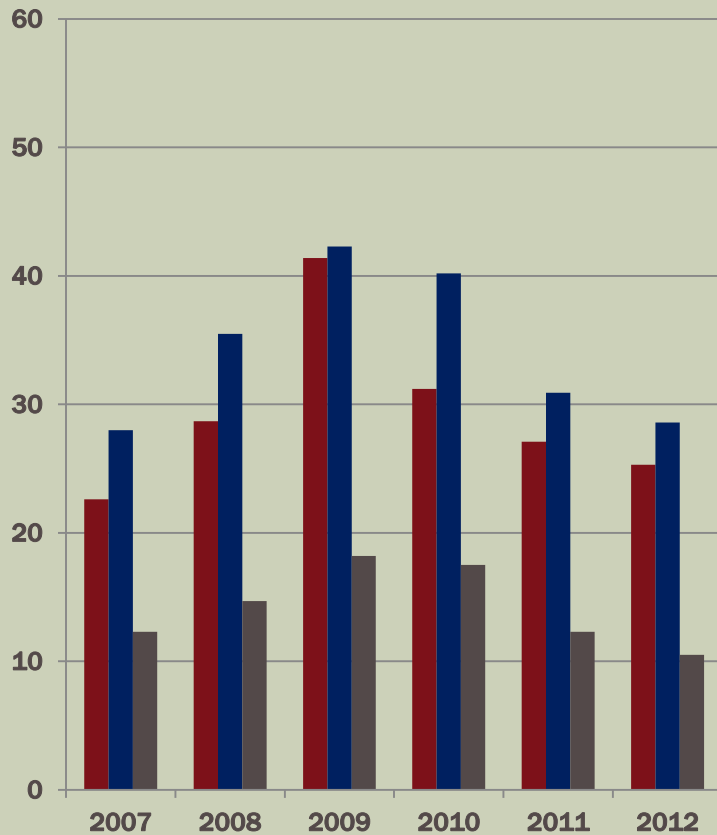
NJASK7

HISTORY RELATIVE TO DFG J AND STATE

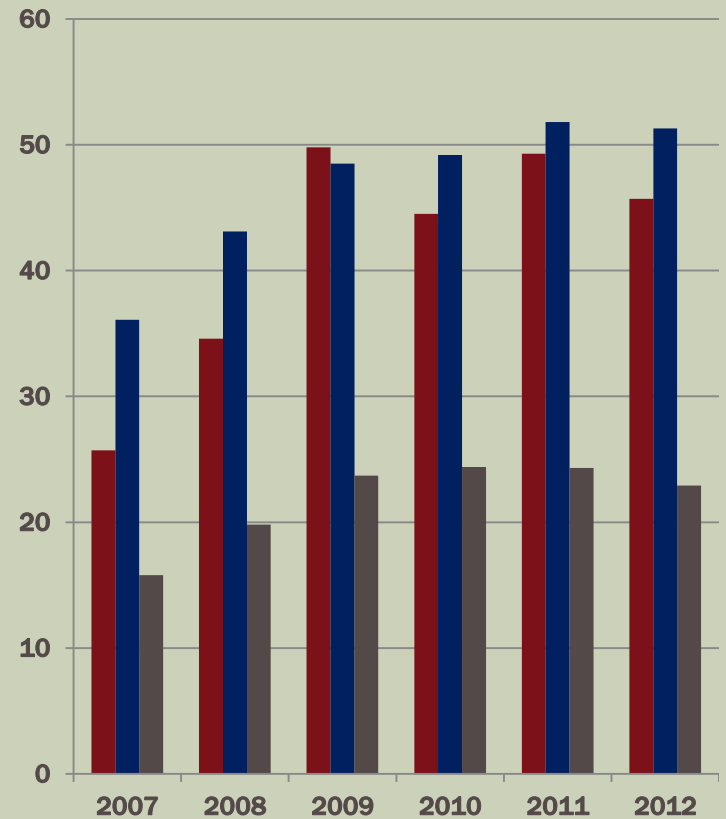
ALL STUDENTS

Percent Advanced Proficient

Language Arts Literacy



Mathematics

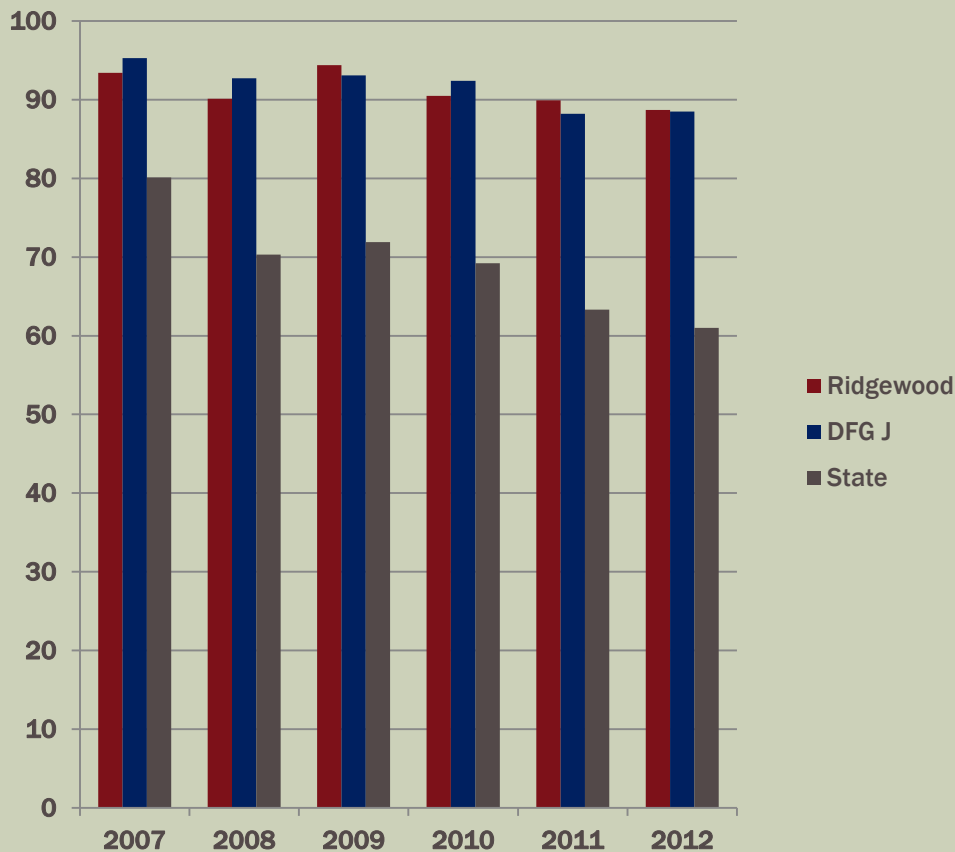


NJASK7

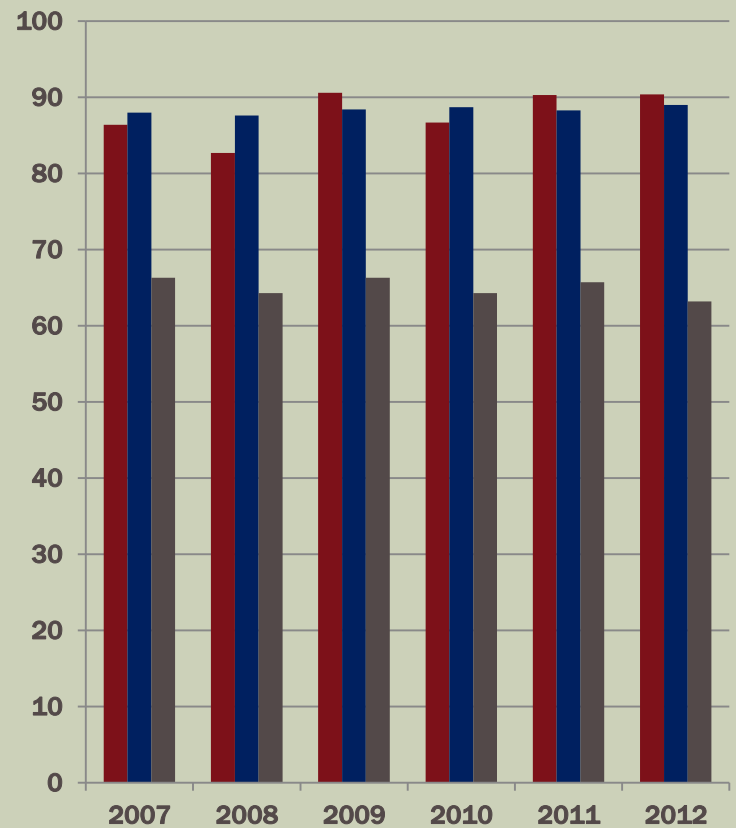
HISTORY RELATIVE TO DFG J AND STATE ALL STUDENTS

Percent Passing

Language Arts Literacy



Mathematics



GEPA/NJASK8

HISTORY RELATIVE TO DFG J

PERCENT OF ALL STUDENTS IN EACH PROFICIENCY LEVEL



	Language Arts Literacy				Mathematics		
	Advanced Proficient	Proficient	Partially Proficient		Advanced Proficient	Proficient	Partially Proficient
2012 NJASK8							
Ridgewood	28.2	67.1	4.7		60.9	31.8	7.3
DFG J	36.3	59.8	4.0		60.0	31.8	8.2
State	14.5	67.7	17.8		30.1	41.5	28.3
2011 NJASK8							
Ridgewood	36.3	59.8	4.0		54.7	35.8	9.5
DFG J	42.9	53.9	3.2		56.6	34.0	9.3
State	19.1	63.0	17.8		30.4	41.1	28.5
2010 NJASK8							
Ridgewood	39.7	54.1	6.1		50.2	38.7	11.0
DFG J	42.3	54.2	3.4		56.3	33.8	9.8
State	18.4	64.1	17.6		29.1	39.4	31.5
2009 NJASK8							
Ridgewood	21.1	73.5	5.5		54.2	34.6	11.2
DFG J	28.1	68.3	3.6		54.7	35.8	9.5
State	11.1	70.9	18.1		29.5	41.7	28.8
2008 NJASK8							
Ridgewood	19.9	74.9	5.3		43.7	44.2	12.1
DFG J	27.2	68.2	4.6		50.9	39.5	9.6
State	11.4	69.7	18.9		24.8	42.6	32.6
2007 GEPA							
Ridgewood	22.2	69.8	8.0		47.4	43.4	9.2
DFG J	27.8	66.5	5.7		49.2	42.5	8.3
State	11.3	62.4	26.4		22.5	45.9	31.6

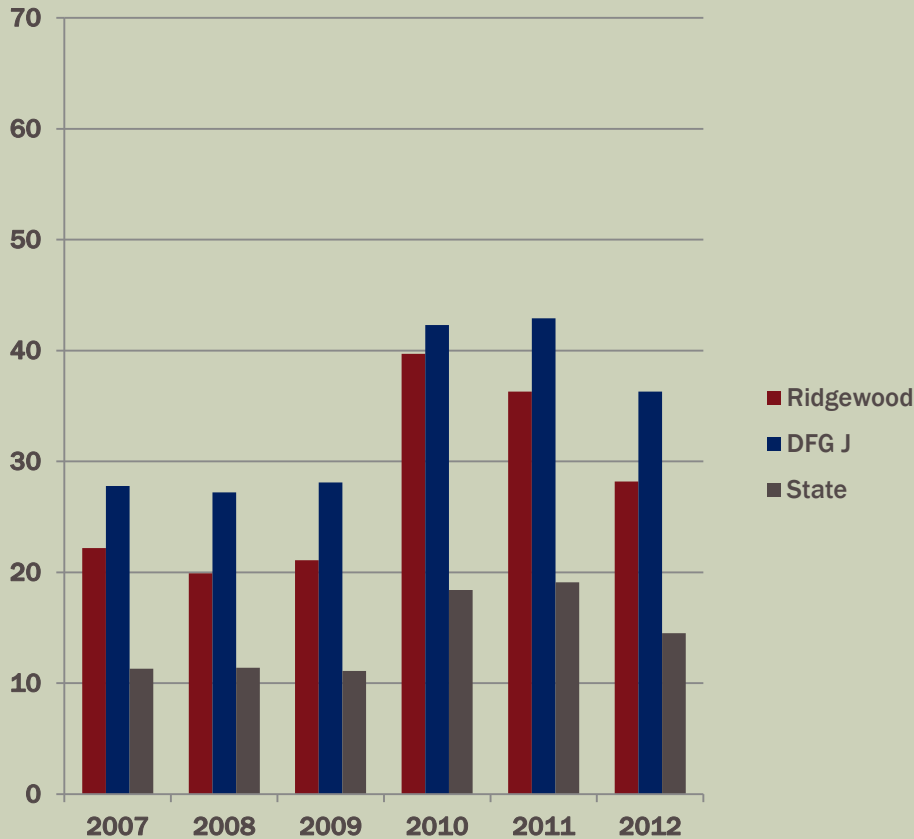
- *Bolded "Advanced Proficient" percentages are equal to or higher than DFG J.*
- *Bolded "Partially Proficient" percentages are equal to or lower than DFG J.*

GEPA/NJASK8

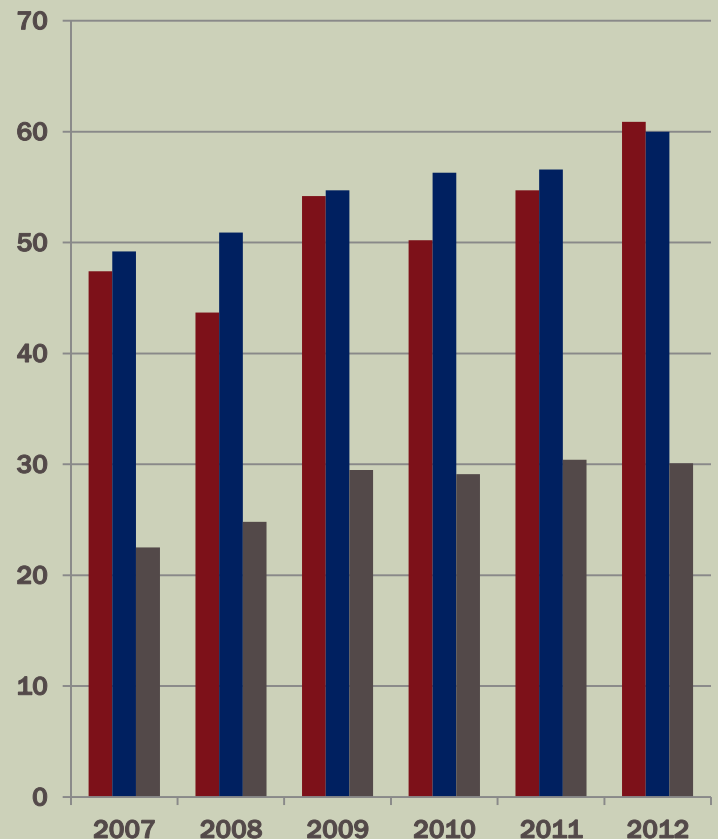
HISTORY RELATIVE TO DFG J AND STATE ALL STUDENTS

Percent Advanced Proficient

Language Arts Literacy



Mathematics

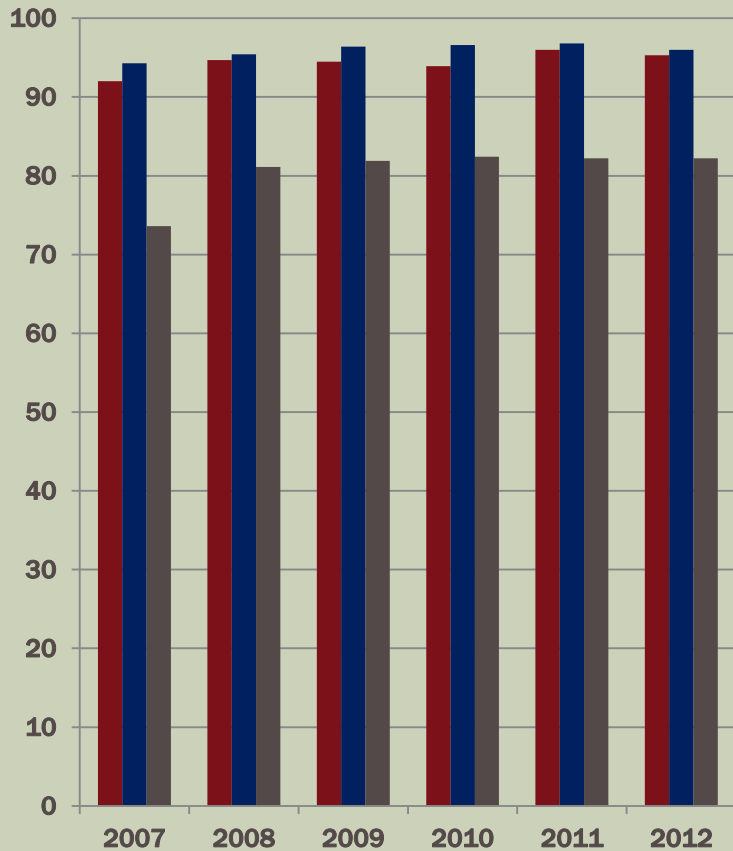


GEPA/NJASK8

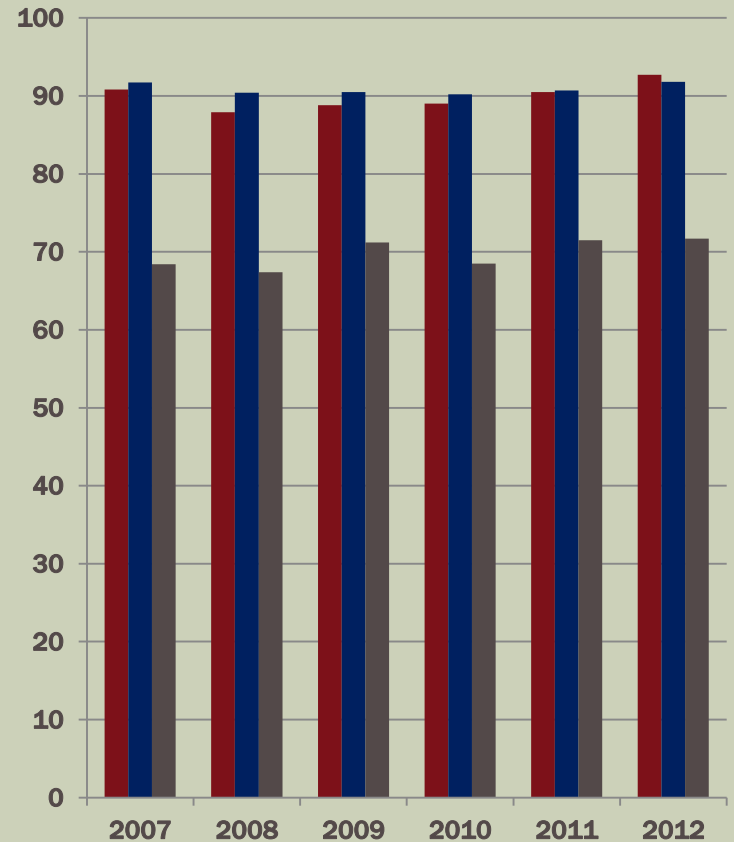
HISTORY RELATIVE TO DFG J AND STATE ALL STUDENTS

Percent Passing

Language Arts Literacy



Mathematics





HSPA

HISTORY RELATIVE TO DFG J AND STATE PERCENT OF ALL STUDENTS IN EACH PROFICIENCY LEVEL



	Language Arts Literacy				Mathematics		
	Advanced Proficient	Proficient	Partially Proficient		Advanced Proficient	Proficient	Partially Proficient
2012							
Ridgewood	39.9	57.0	3.2		58.7	32.8	8.6
DFG J	46.5	51.8	1.7		59.0	35.3	5.7
State	21.8	69.7	8.5		27.5	51.8	20.7
2011							
Ridgewood	40.8	55.7	3.5		56.0	38.6	5.5
DFG J	46.1	51.7	2.3		56.9	36.6	6.5
State	20.8	68.8	10.5		25.3	49.9	24.8
2010							
Ridgewood	41.8	54.2	4.0		58.2	36.2	5.6
DFG J	43.2	54.4	2.4		57.6	37.1	5.3
State	18.4	68.7	12.9		24.0	50.1	25.9
2009							
Ridgewood	30.7	66.5	2.8		56.6	38.3	5.2
DFG J	29.5	66.5	4.0		54.2	38.1	7.7
State	13.4	70.2	16.4		23.0	49.7	27.2
2008							
Ridgewood	29.5	67.7	2.8		57.3	38.0	4.7
DFG J	27.2	68.9	4.0		55.3	38.4	6.3
State	12.2	70.6	17.2		23.4	51.4	25.2
2007							
Ridgewood	40.8	55.9	3.3		58.7	35.8	5.5
DFG J	42.0	55.4	2.6		53.0	40.8	6.1
State	19.4	66.0	14.7		23.2	50.2	26.6

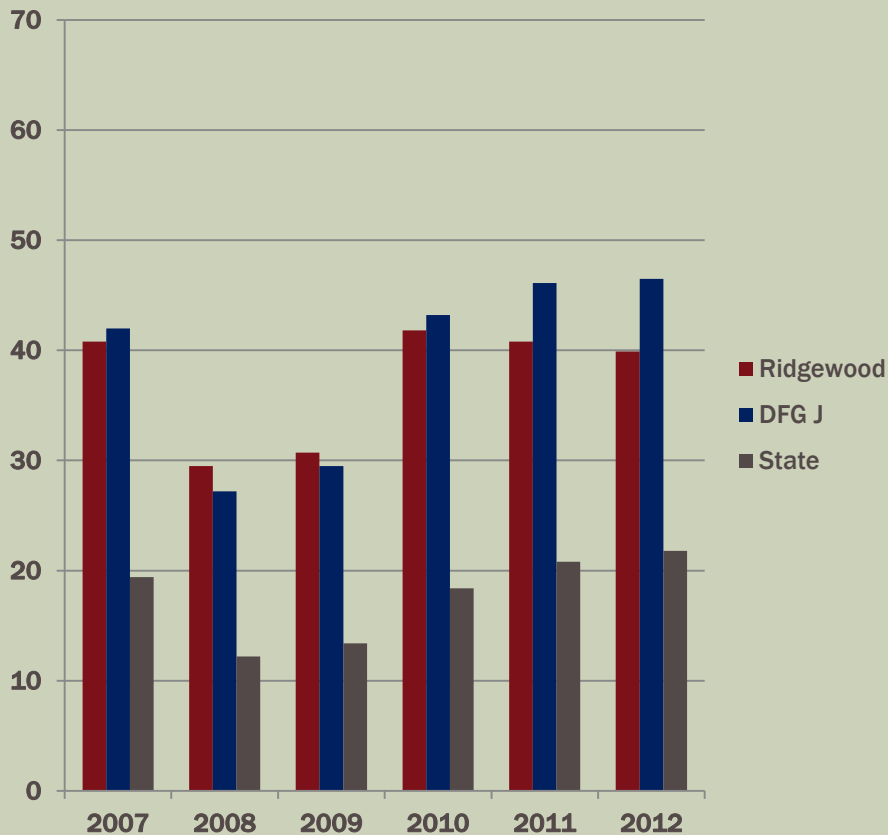
- *Bolded "Advanced Proficient" percentages are equal to or higher than DFG J.*
- *Bolded "Partially Proficient" percentages are equal to or lower than DFG J.*

HSPA

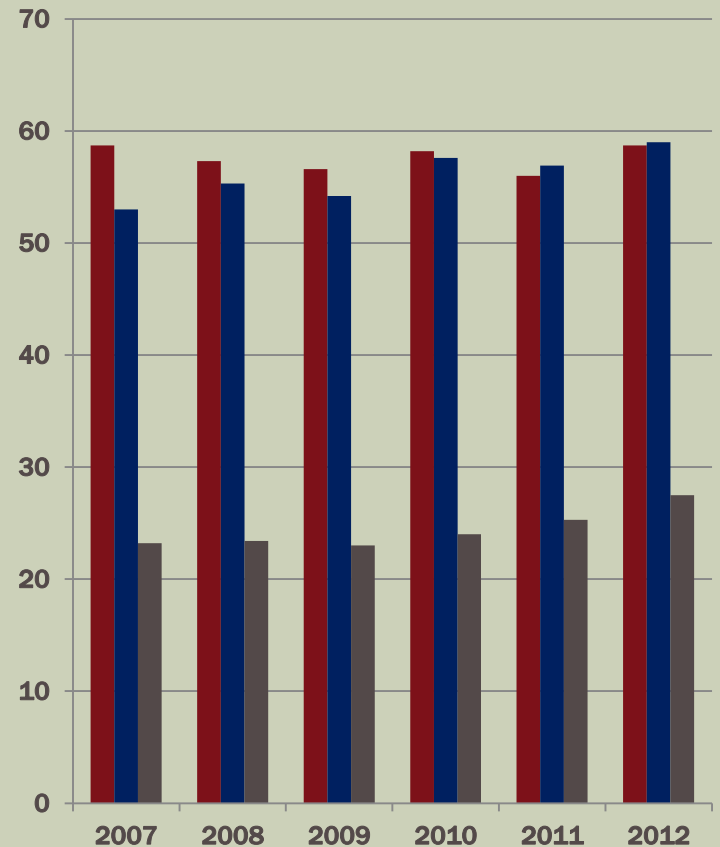
HISTORY RELATIVE TO DFG J AND STATE ALL STUDENTS

Percent Advanced Proficient

Language Arts Literacy



Mathematics



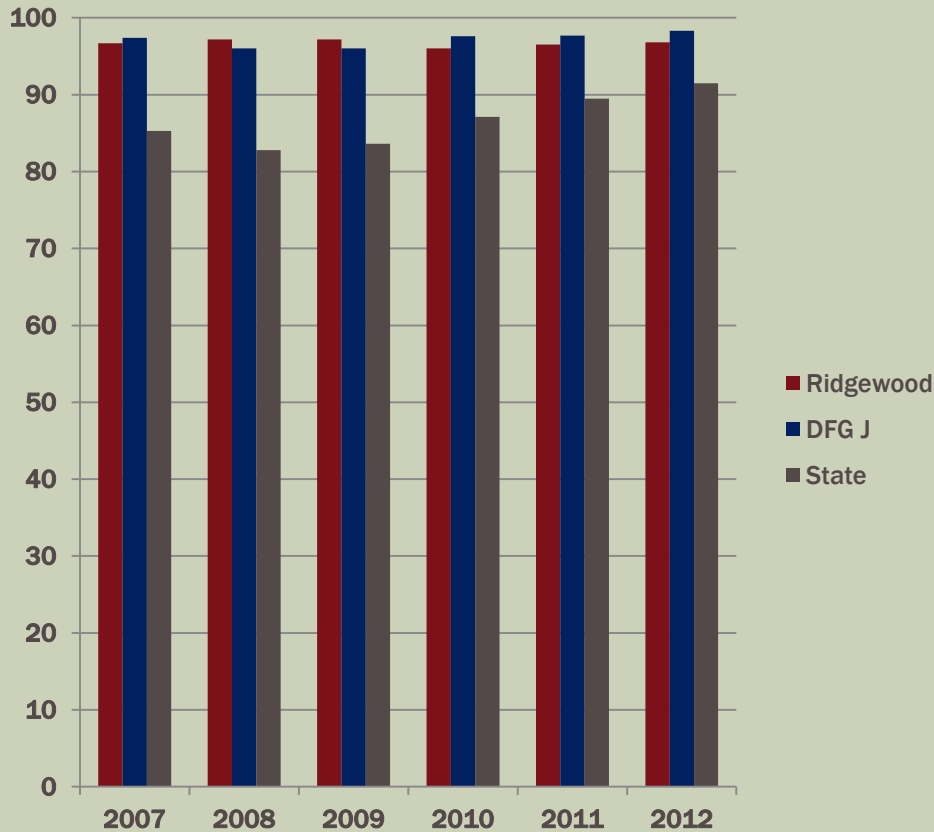
HSPA

HISTORY RELATIVE TO DFG J

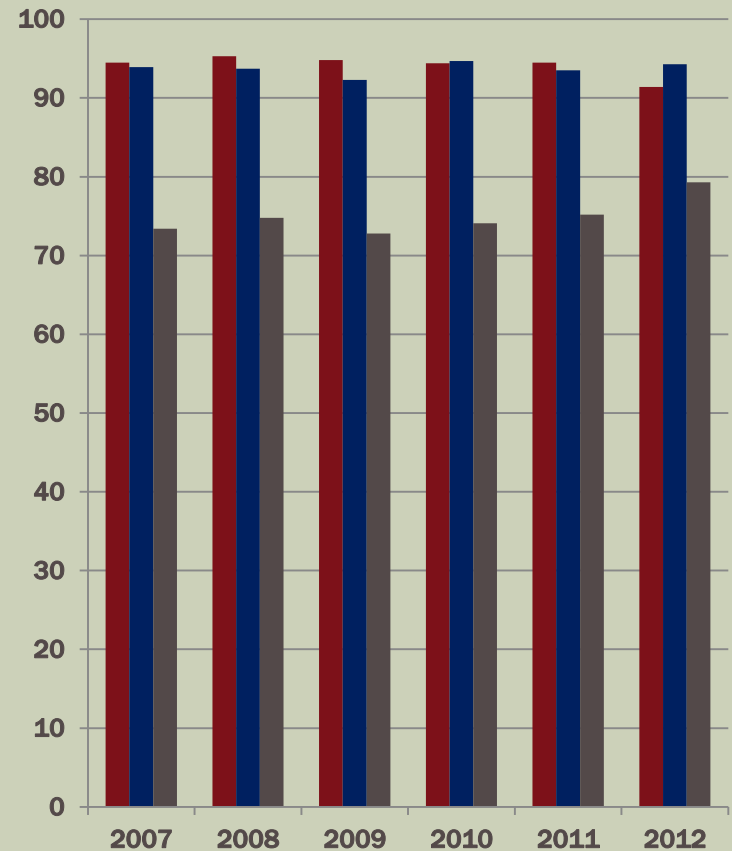
ALL STUDENTS

Percent Passing

Language Arts Literacy



Mathematics



SCIENCE

HISTORY RELATIVE TO DFG AND STATE

PERCENT OF ALL STUDENTS IN EACH PROFICIENCY LEVEL



	NJASK4 Science			NJASK8 Science			NJ Biology Competency Test		
	Advanced Proficient	Proficient	Partially Proficient	Advanced Proficient	Proficient	Partially Proficient	Advanced Proficient	Proficient	Partially Proficient
2012									
Ridgewood	69.2	29.0	1.9	54.9	40.4	4.7	37.4	55.1	7.5
DFG J	68.4	29.9	1.7	61.5	34.8	3.8	37.6	50.0	12.5
State	44.6	46.7	8.7	32.4	49.5	18.1	14.4	44.8	40.8
2011									
Ridgewood	71.7	26.7	1.6	50.4	45.2	4.4	52.3	40.8	6.9
DFG J	70.2	27.6	2.2	56.5	39.7	3.8	49.7	38.9	11.4
State	47.7	42.3	10.0	29.3	51.9	18.8	19.3	38.0	42.7
2010									
Ridgewood	61.5	37.4	1.0	58.4	37.3	4.3	38.2	49.9	11.9
DFG J	64.8	34.3	0.9	59.8	37.1	3.1	40.4	47.4	12.2
State	44.2	49.2	6.6	31.4	51.5	17.0	14.2	41.7	44.1
2009									
Ridgewood	71.1	27.2	1.8	55.1	43.2	1.6			
DFG J	69.8	28.7	1.5	57.4	39.4	3.2			
State	47.0	44.0	9.1	30.4	53.8	15.9			
2008									
Ridgewood	62.9	33.3	3.8	49.2	46.3	4.5			
DFG J	61.3	34.3	4.3	61.6	35.2	3.2			
State	39.3	45.7	15.0	32.2	51.8	16.0			
2007									
Ridgewood	59.9	36.9	3.2	36.5	59.5	4.0			
DFG J	64.6	31.8	3.5	51.6	45.3	3.1			
State	40.8	42.3	16.9	24.6	54.3	21.1			

- **Bolded “Advanced Proficient” percentages are equal to or higher than DFG J.**
- **Bolded “Partially Proficient” percentages are equal to or lower than DFG J.**

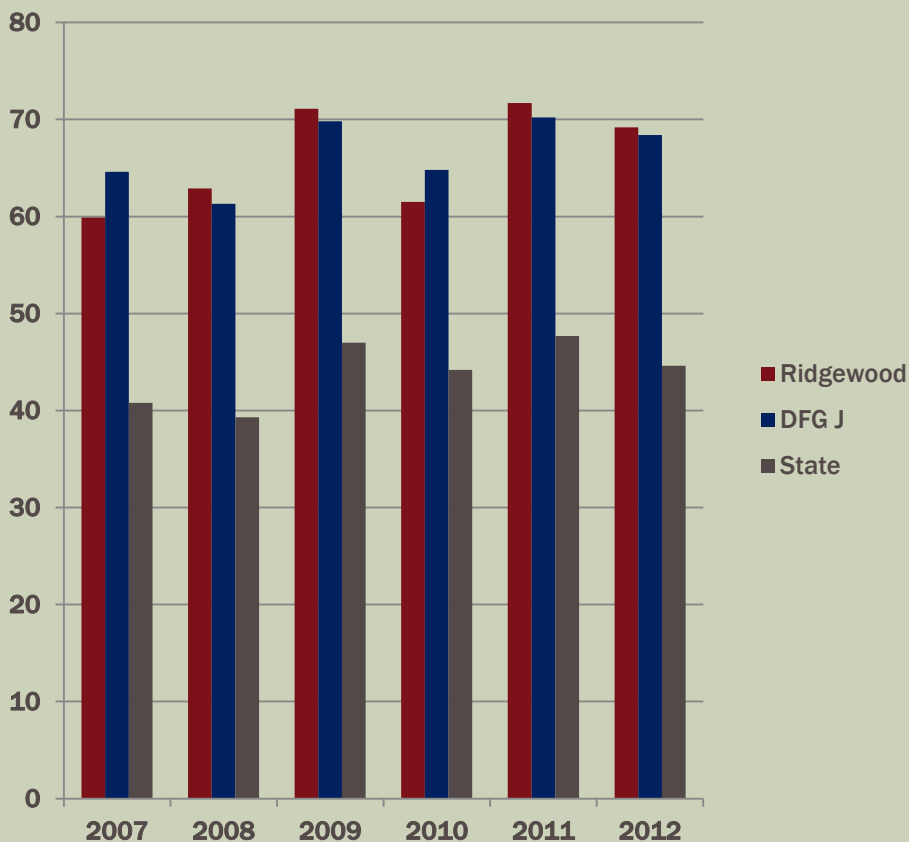
NJASK SCIENCE

HISTORY RELATIVE TO DFG J AND STATE

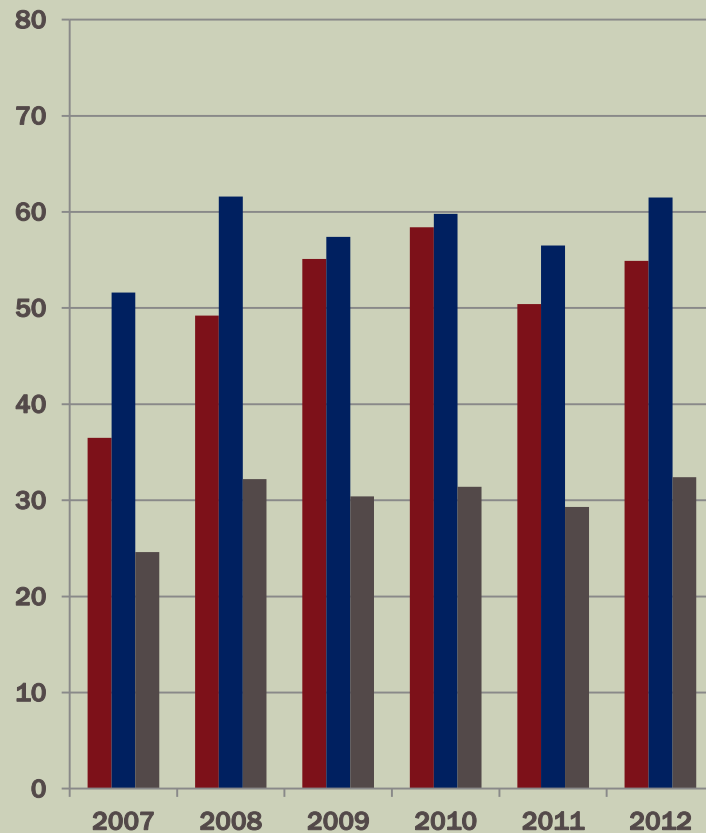
ALL STUDENTS

Percent Advanced Proficient

Grade 4



Grade 8



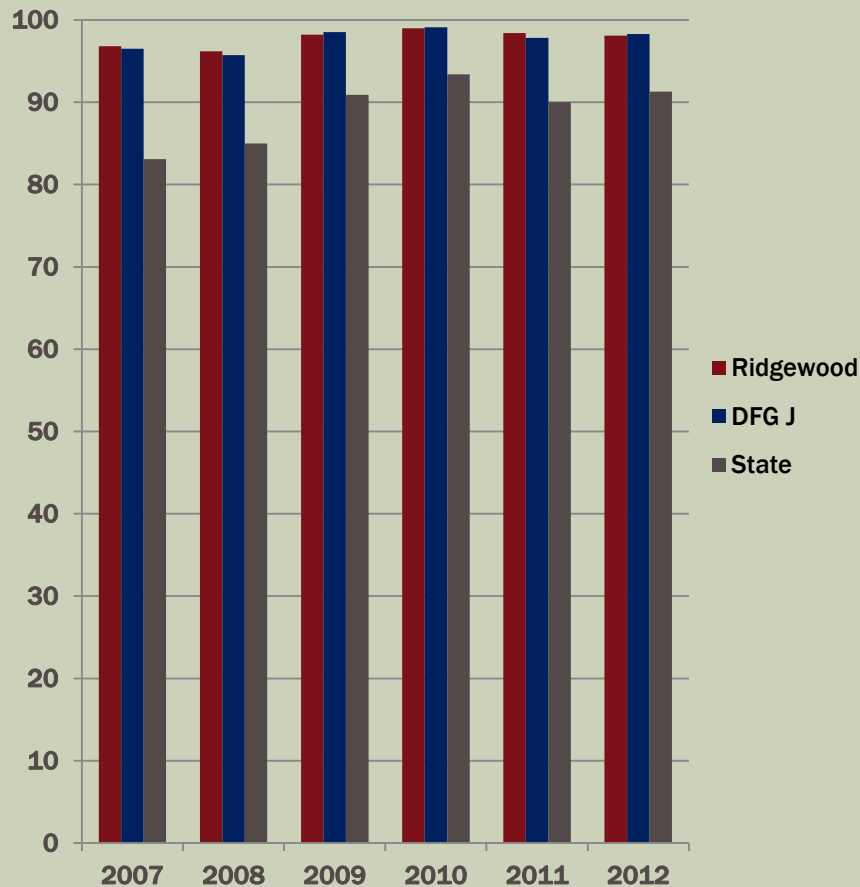
NJASK SCIENCE

HISTORY RELATIVE TO DFG J AND STATE

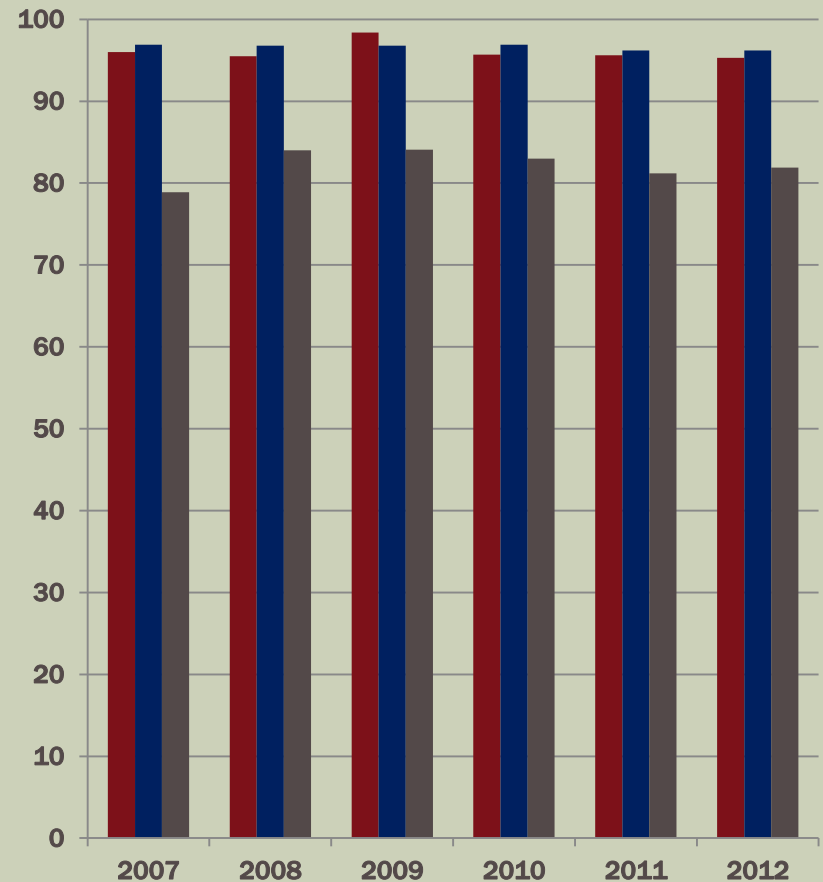
ALL STUDENTS

Percent Passing

Grade 4



Grade 8

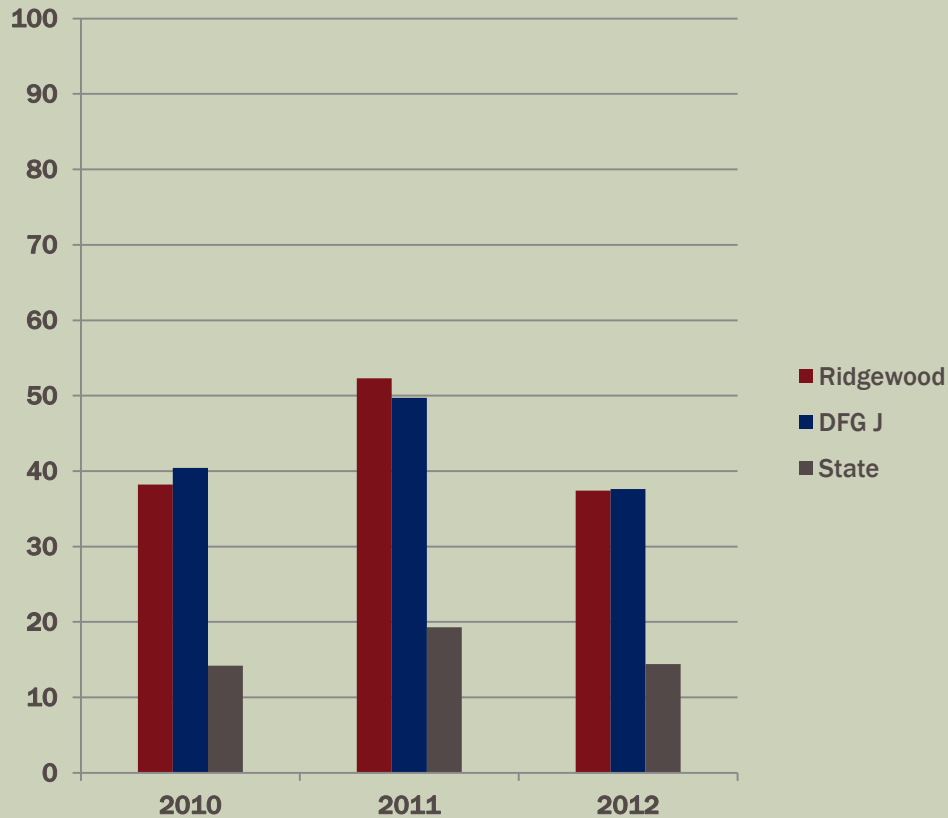


NJBCT (NEW JERSEY BIOLOGY COMPETENCY TEST)

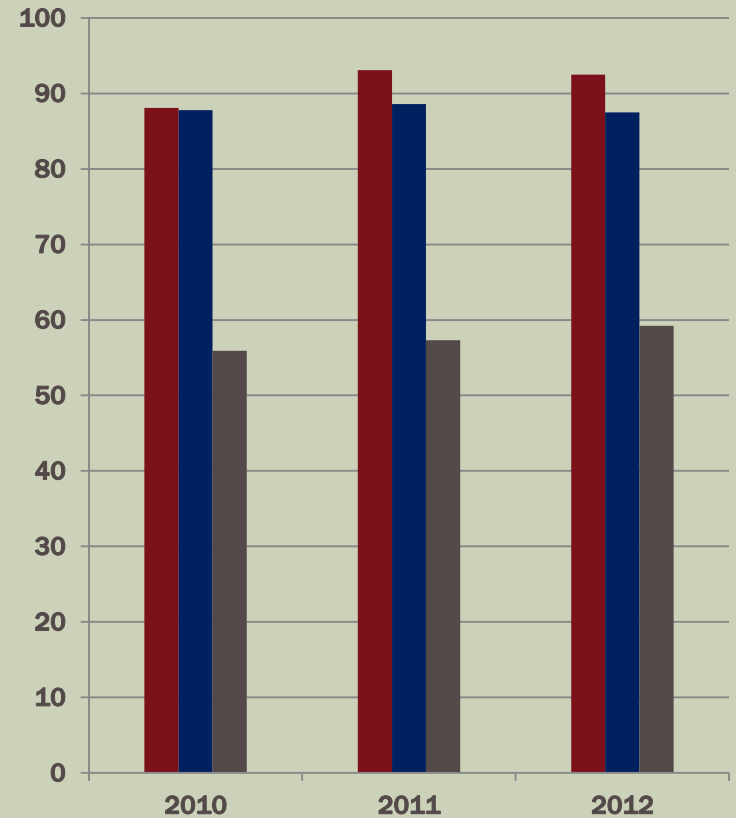
HISTORY RELATIVE TO DFG J AND STATE

PERCENT OF ALL STUDENTS IN EACH PROFICIENCY LEVEL

Advanced Proficient



Passing



OTHER PERFORMANCE MEASURES

	Mean SAT			Ratio Stu/Teacher	Ratio Stu/Admin	Budgetary Cost/Pupil*
	Math	Verbal	Essay			
Ridgewood	613	576	588	11.8	293.5	\$12,867
DFG J districts with high schools	607	580	591	11.2	268.2	\$13,400
				(estimated)	(estimated)	(estimated)
New Jersey districts with high schools	517	493	496	11.2	192.2	\$13,290

*excludes certain expenses such as transportation, O-O-D tuition

Data Sources: 2010-2011 NJDOE School Report Card
Taxpayers' Guide to Education Spending July 2012

THE FINAL QUESTION: WHAT ARE WE DOING BASED ON THE DATA?

- All schools set student achievement goals each year.
- Professional development supports student achievement goals.
- Last year, 25 of 30 goals were met or exceeded.

Click here to read the report.



KEY POINTS IN MIDDLE SCHOOL LANGUAGE ARTS ACTION PLANS



- Examine feasibility of double period English in Grade 6
- Focus on differentiating instruction to lift the level of thinking for all students
 - ongoing classroom assessment
 - Measures of Academic Progress (MAP)
- Carry out Five Year Plan
 - visit other schools
 - read current research
 - align to Common Core
- Consider three-year Professional Development partnership with National Writing Project. Goals:
 - Increase critical reading and critical response to text
 - Increase nonfiction reading/writing in other content areas
 - Increase academic rigor