



RIDGEWOOD

PUBLIC SCHOOLS



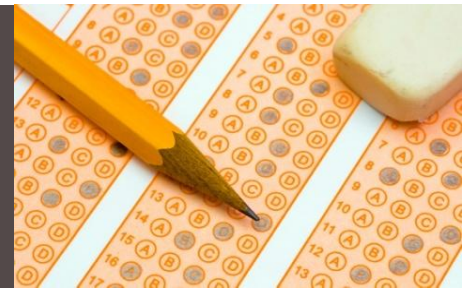
District-Wide State Testing Report: 2010-2011

Regina Lemerich Botsford

Assistant Superintendent for Curriculum, Instruction and Assessment

November 2011

STATE TESTING 2011



- Criterion-referenced tests required by the state administered in Spring, 2011
 - Grade 3: *NJASK* in Language Arts Literacy and Mathematics
 - Grade 4: *NJASK* in Language Arts Literacy, Mathematics, and Science
 - Grades 5, 6, 7: *NJASK* in Language Arts Literacy and Mathematics
 - Grade 8: *NJASK* in Language Arts Literacy, Mathematics, and Science
 - Grade 11: *HSPA* in Language Arts Literacy and Mathematics
 - End of Course: *NJBCT* New Jersey Biology Competency Test. Postponed as a graduation requirement
- Multiple-choice and open-ended items
- Percent Passing = Percent Advanced Proficient + Percent Proficient
- Different test questions each year → level of difficulty varies
- Different students every year → level of performance varies

DISTRICT FACTOR GROUP INFORMATION



- The DFG is based on population density, the percent of individuals in poverty, as well as residents' education level, occupational status, unemployment rate, and median family income.
- Our DFG changed from I to J in 2005.
- New Jersey has 25 J districts.
- Other J districts: Glen Rock, HoHoKus, Northern Highlands, Saddle River, Upper Saddle River, Woodcliff Lake, Millburn, West Windsor-Plainsboro, Rumson, Chatham, Mountain Lakes.
- Ridgewood is the second largest J district in New Jersey.

TWO ESSENTIAL QUESTIONS

- How did we do relative to our comparison group?
- How are we doing over time?



NJASK3

HISTORY RELATIVE TO DFG J

PERCENT OF ALL STUDENTS IN EACH PROFICIENCY LEVEL



	Language Arts Literacy				Mathematics		
	Advanced Proficient	Proficient	Partially Proficient		Advanced Proficient	Proficient	Partially Proficient
2011 NJASK3							
Ridgewood	25.1	63.1	11.8		72.5	24.1	3.4
DFG J	17.5	67.4	15.1		64.4	29.7	5.8
2010 NJASK3							
Ridgewood	15.1	73.0	11.9		63.3	30.5	6.2
DFG J	13.9	68.3	17.8		62.1	31.1	6.8
2009 NJASK3							
Ridgewood	12.7	75.3	12.0		55.5	38.2	6.3
DFG J	14.0	72.0	14.0		53.7	38.4	7.9
2008 NJASK3							
Ridgewood	12.9	83.7	3.3		52.2	45.2	2.6
DFG J	11.5	84.6	3.9		54.0	42.2	3.9
2007 NJASK3							
Ridgewood	20.6	77.1	2.3		57.7	40.5	1.8
DFG J	18.1	77.3	4.6		53.2	43.8	3.0
2006 NJASK3							
Ridgewood	11.0	84.5	4.5		53.8	43.4	2.8
DFG J	8.0	87.5	4.5		50.6	45.8	3.5
2005 NJASK3							
Ridgewood	15.4	80.9	3.7		49.5	45.9	4.6
DFG J	9.3	87.0	3.7		48.0	47.2	4.8

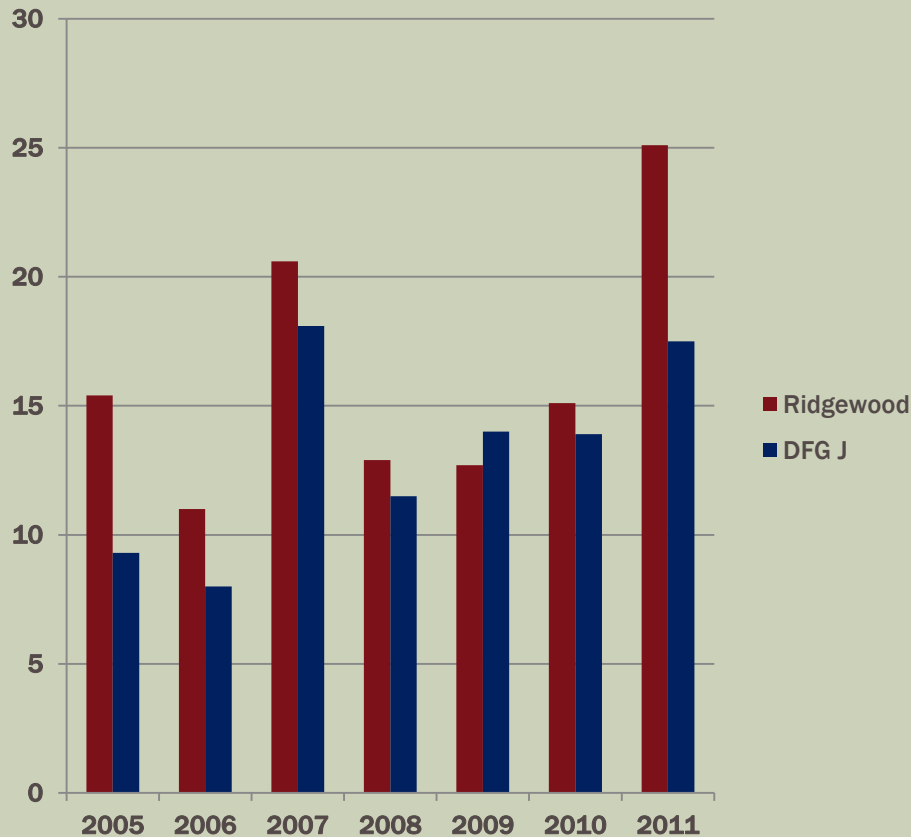
- *Bolded “Advanced Proficient” percentages are equal to or higher than DFG J.*
- *Bolded “Partially Proficient” percentages are equal to or lower than DFG J.*

NJASK3

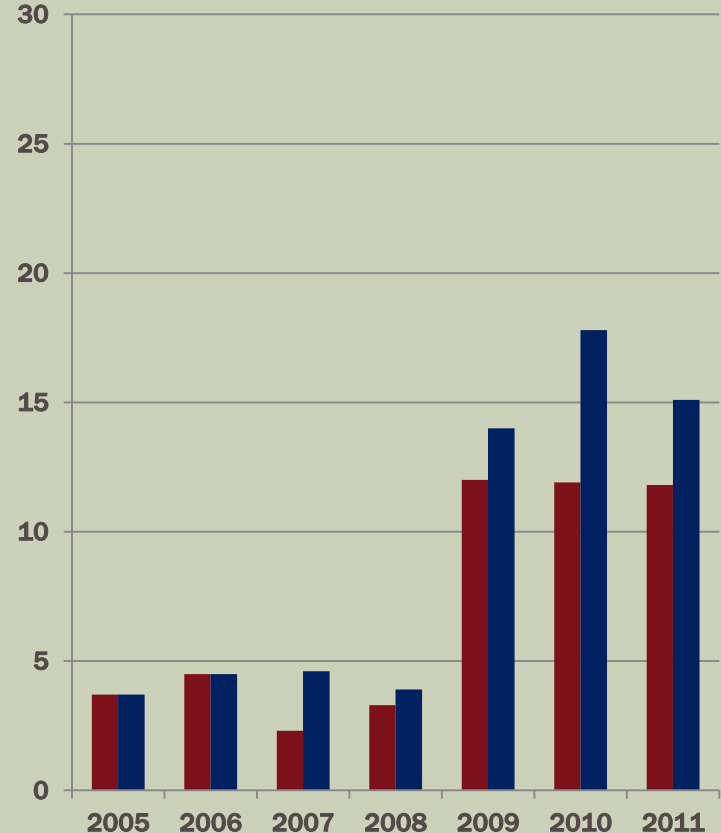
HISTORY OF COMPARABLE TESTS RELATIVE TO DFG J PERCENT OF ALL STUDENTS IN EACH PROFICIENCY LEVEL

Language Arts Literacy

Advanced Proficient



Partially Proficient

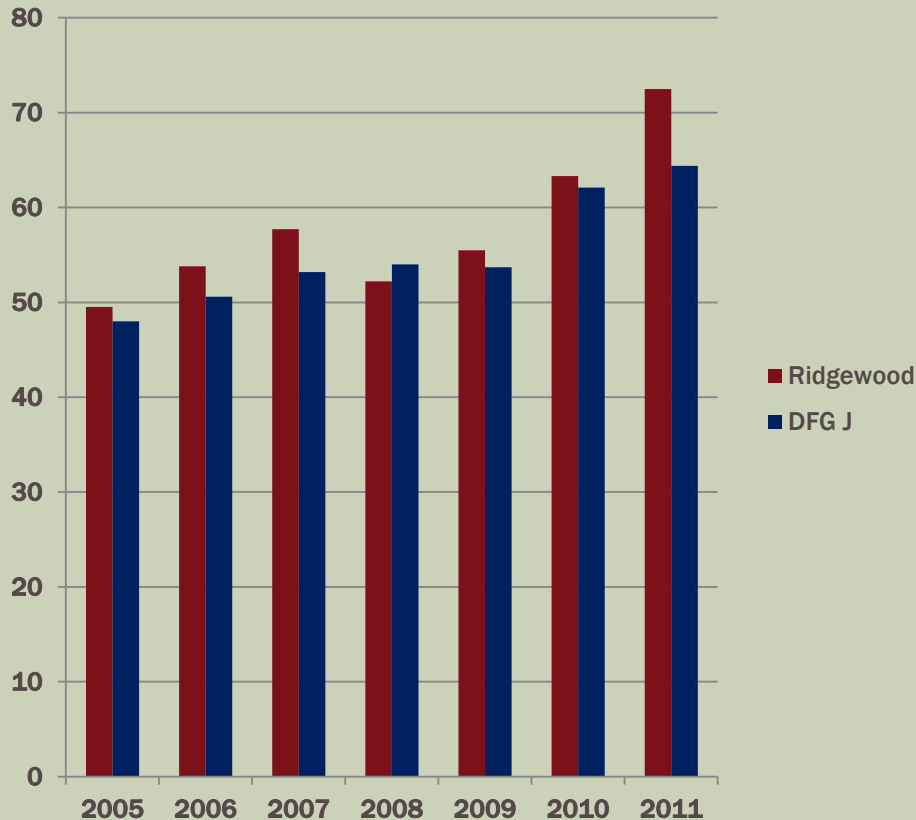


NJASK3

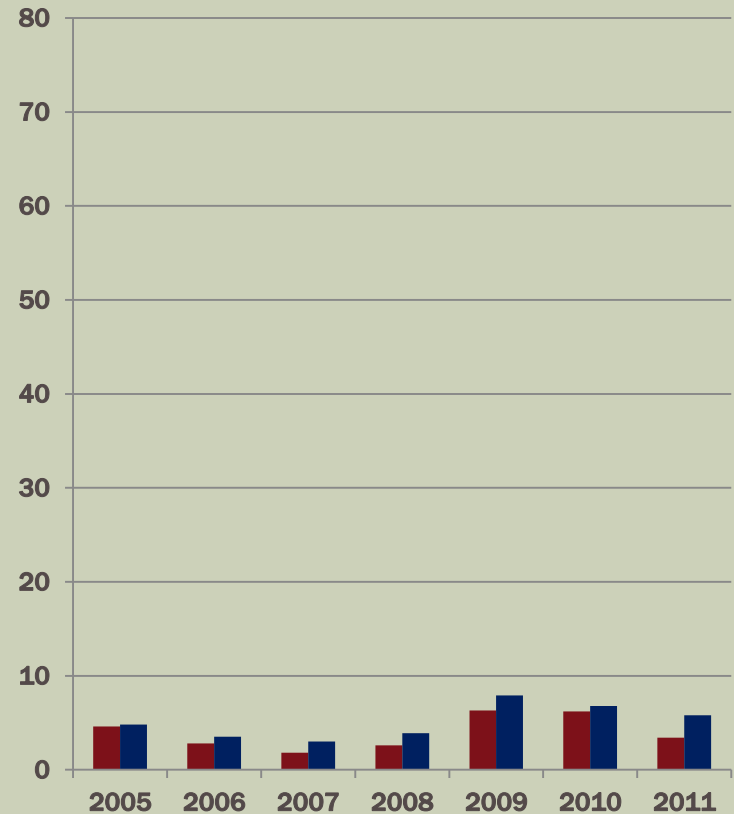
HISTORY OF COMPARABLE TESTS RELATIVE TO DFG J PERCENT OF ALL STUDENTS IN EACH PROFICIENCY LEVEL

Mathematics

Advanced Proficient



Partially Proficient



NJASK4

HISTORY RELATIVE TO DFG J

PERCENT OF ALL STUDENTS IN EACH PROFICIENCY LEVEL



	Language Arts Literacy				Mathematics				Science		
	Advanced Proficient	Proficient	Partially Proficient		Advanced Proficient	Proficient	Partially Proficient		Advanced Proficient	Proficient	Partially Proficient
2011 NJASK4											
Ridgewood	20.9	68.1	11.0		66.4	30.7	2.9		71.7	26.7	1.6
DFG J	17.2	67.8	15.0		55.4	38.7	6.0		70.2	27.6	2.2
2010 NJASK4											
Ridgewood	20.3	66.9	12.9		59.8	35.2	5.0		61.5	37.4	1.0
DFG J	21.2	63.1	15.8		58.7	34.7	6.6		64.8	34.3	0.9
2009 NJASK4											
Ridgewood	21.9	66.7	11.5		54.6	40.1	5.3		71.1	27.2	1.8
DFG J	16.3	69.2	14.5		49.5	40.5	9.9		69.8	28.7	1.5
2008 NJASK4											
Ridgewood	8.4	88.2	3.4		67.6	29.9	2.5		62.9	33.3	3.8
DFG J	9.8	84.5	5.7		62.0	33.9	4.1		61.3	34.3	4.3
2007 NJASK4											
Ridgewood	19.9	76.9	3.2		65.2	32.0	2.8		59.9	36.9	3.2
DFG J	14.6	80.4	5.0		64.6	31.9	3.5		64.6	31.8	3.5
2006 NJASK4											
Ridgewood	14.0	83.3	2.8		70.3	27.6	2.1		47.9	48.9	3.2
DFG J	9.6	84.8	5.5		63.0	32.0	5.0		47.2	48.5	4.3
2005 NJASK4											
Ridgewood	14.5	80.4	5.1		55.4	40.4	4.1		43.6	51.3	5.1
DFG J	9.3	84.5	6.1		47.8	44.7	7.5		39.1	55.7	5.1

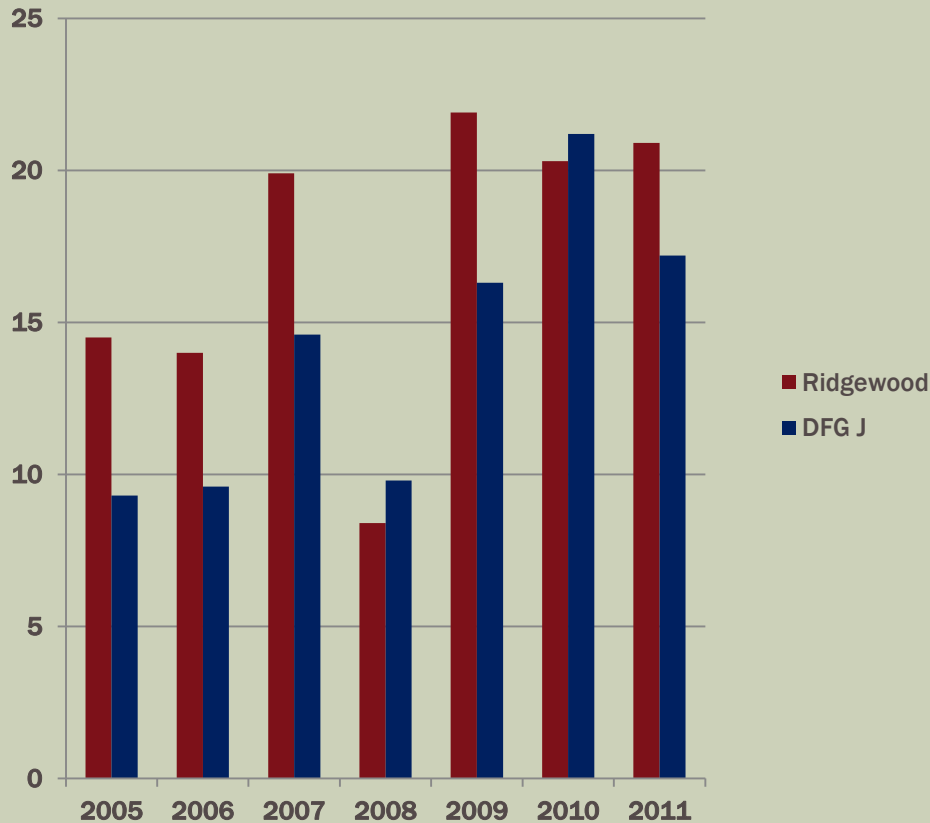
- *Bolded “Advanced Proficient” percentages are equal to or higher than DFG J.*
- *Bolded “Partially Proficient” percentages are equal to or lower than DFG J.*

NJASK4

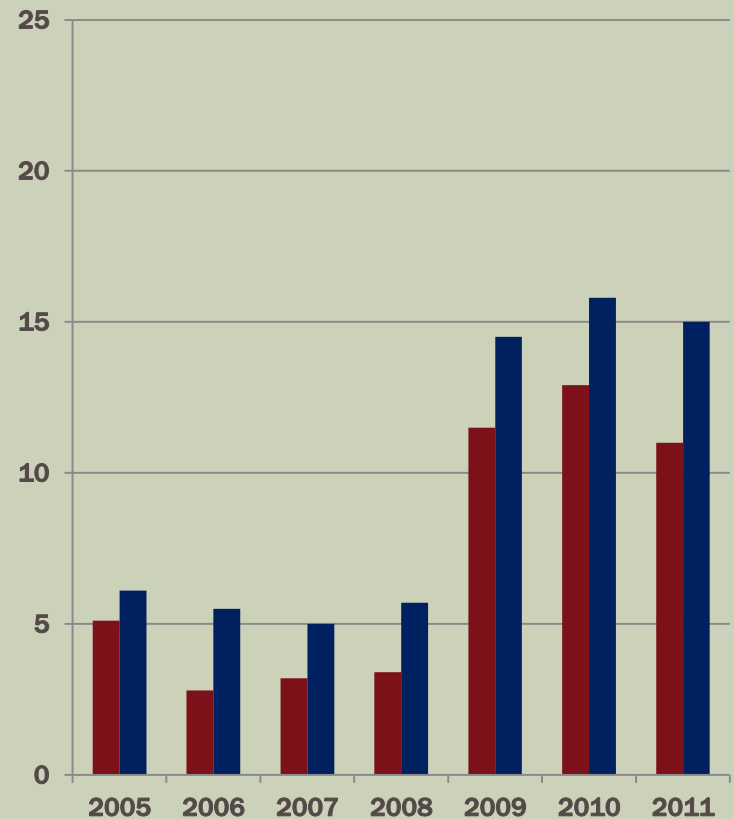
HISTORY OF COMPARABLE TESTS RELATIVE TO DFG J PERCENT OF ALL STUDENTS IN EACH PROFICIENCY LEVEL

Language Arts Literacy

Advanced Proficient



Partially Proficient

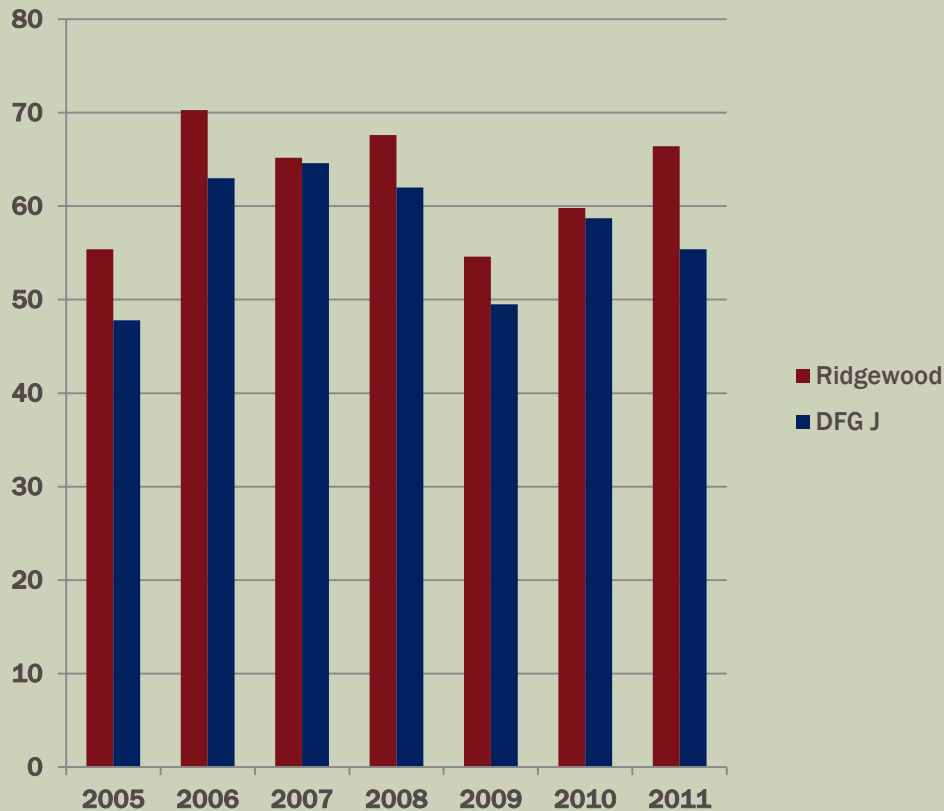


NJASK4

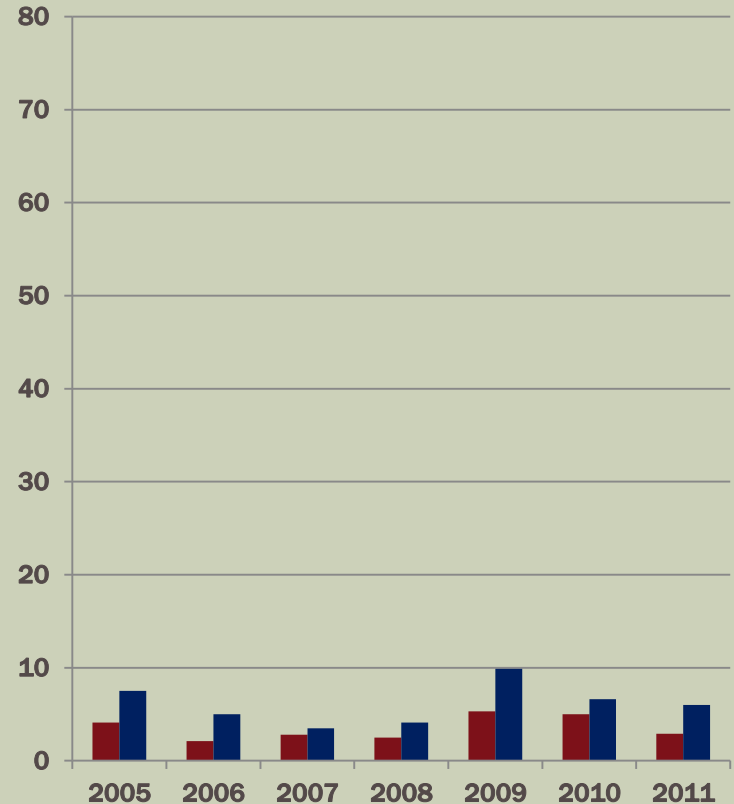
HISTORY OF COMPARABLE TESTS RELATIVE TO DFG J PERCENT OF ALL STUDENTS IN EACH PROFICIENCY LEVEL

Mathematics

Advanced Proficient



Partially Proficient

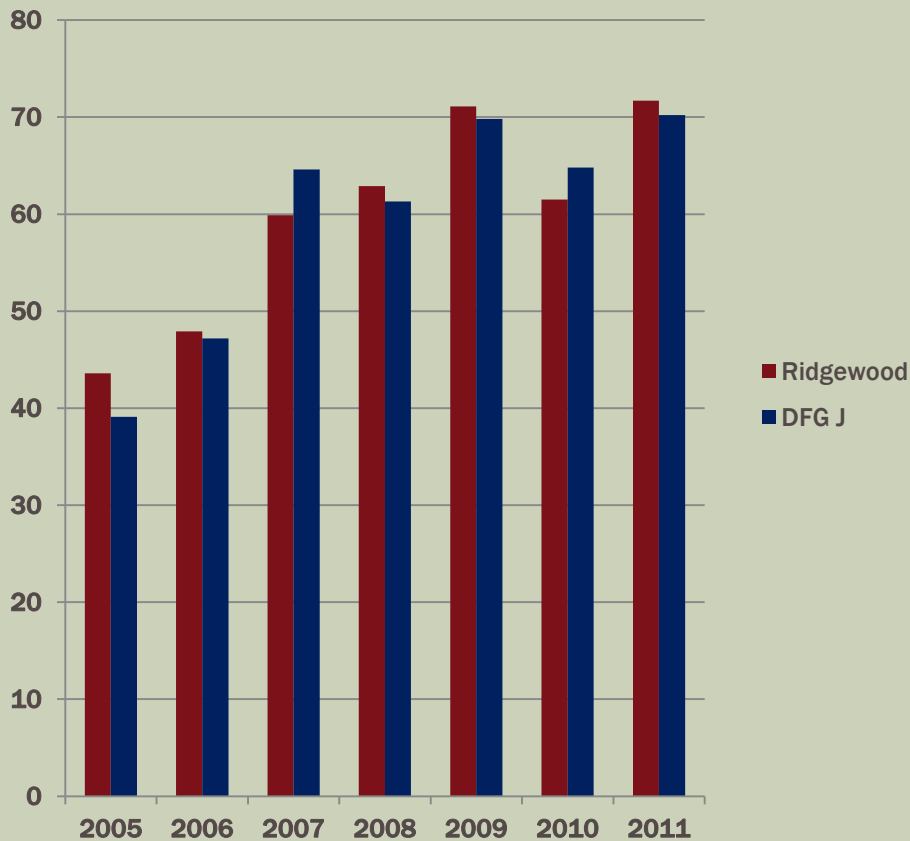


NJASK4

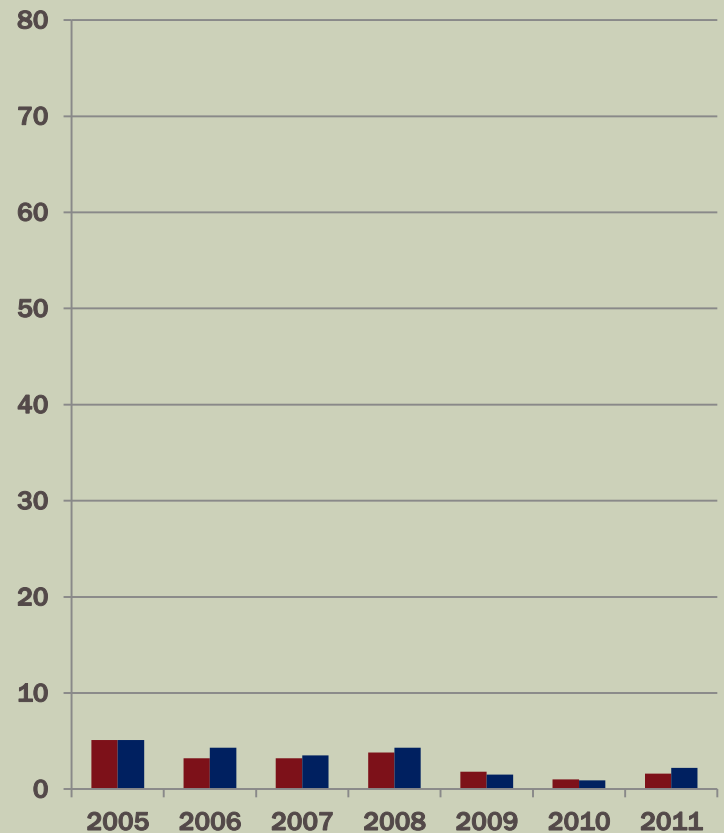
HISTORY OF COMPARABLE TESTS RELATIVE TO DFG J PERCENT OF ALL STUDENTS IN EACH PROFICIENCY LEVEL

Science

Advanced Proficient



Partially Proficient



NJASK5

HISTORY RELATIVE TO DFG J

PERCENT OF ALL STUDENTS IN EACH PROFICIENCY LEVEL



	Language Arts Literacy			Mathematics		
	Advanced Proficient	Proficient	Partially Proficient	Advanced Proficient	Proficient	Partially Proficient
2011 NJASK5						
Ridgewood	22.7	67.8	9.5	75.0	21.9	3.1
DFG J	17.2	69.7	13.2	68.3	27.7	4.0
2010 NJASK5						
Ridgewood	27.2	62.7	10.2	64.8	29.7	5.5
DFG J	24.3	62.8	12.9	64.6	30.1	5.3
2009 NJASK5						
Ridgewood	26.4	64.9	8.7	64.8	30.3	4.9
DFG J	23.0	65.5	11.5	58.6	34.4	7.0
2008 NJASK5						
Ridgewood	9.2	78.4	12.4	50.4	44.0	5.6
DFG J	10.9	74.6	14.5	49.7	43.3	7.0
2007 NJASK5						
Ridgewood	29.6	69.5	0.9	47.7	50.1	2.2
DFG J	26.9	71.3	1.8	51.4	43.9	4.7
2006 NJASK5						
Ridgewood	27.5	70.1	2.4	54.7	41.2	4.0
DFG J	22.4	75.1	2.5	49.1	45.3	5.6

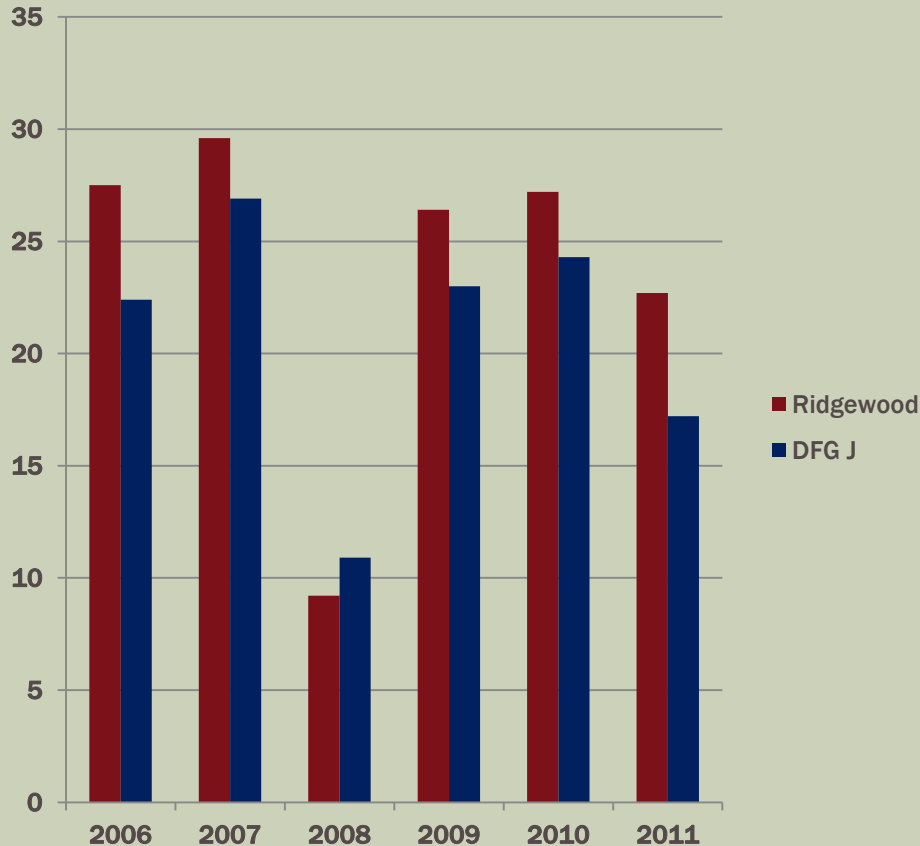
- *Bolded “Advanced Proficient” percentages are equal to or higher than DFG J.*
- *Bolded “Partially Proficient” percentages are equal to or lower than DFG J.*

NJASK5

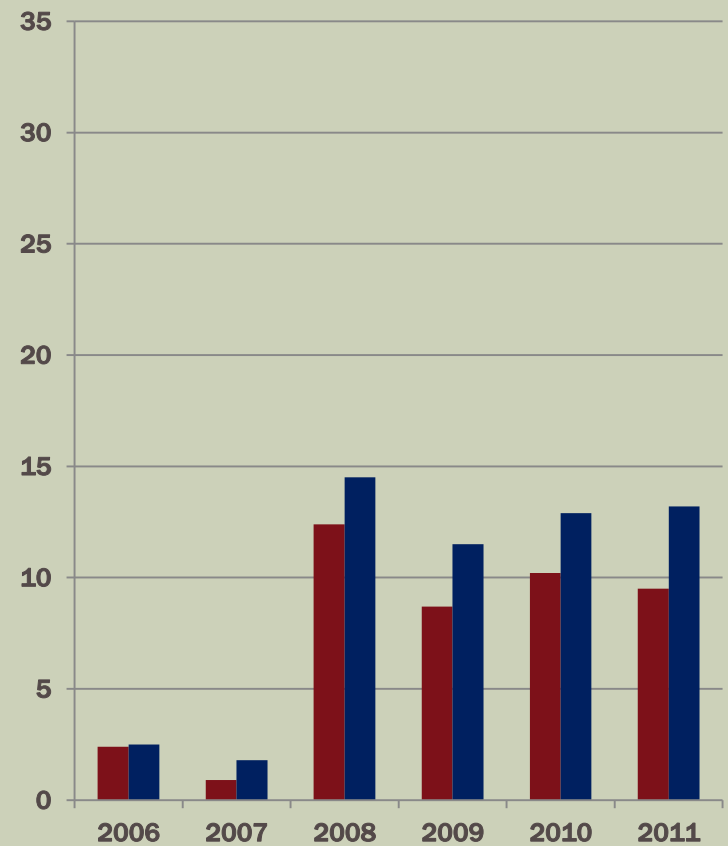
HISTORY OF COMPARABLE TESTS RELATIVE TO DFG J PERCENT OF ALL STUDENTS IN EACH PROFICIENCY LEVEL

Language Arts Literacy

Advanced Proficient



Partially Proficient

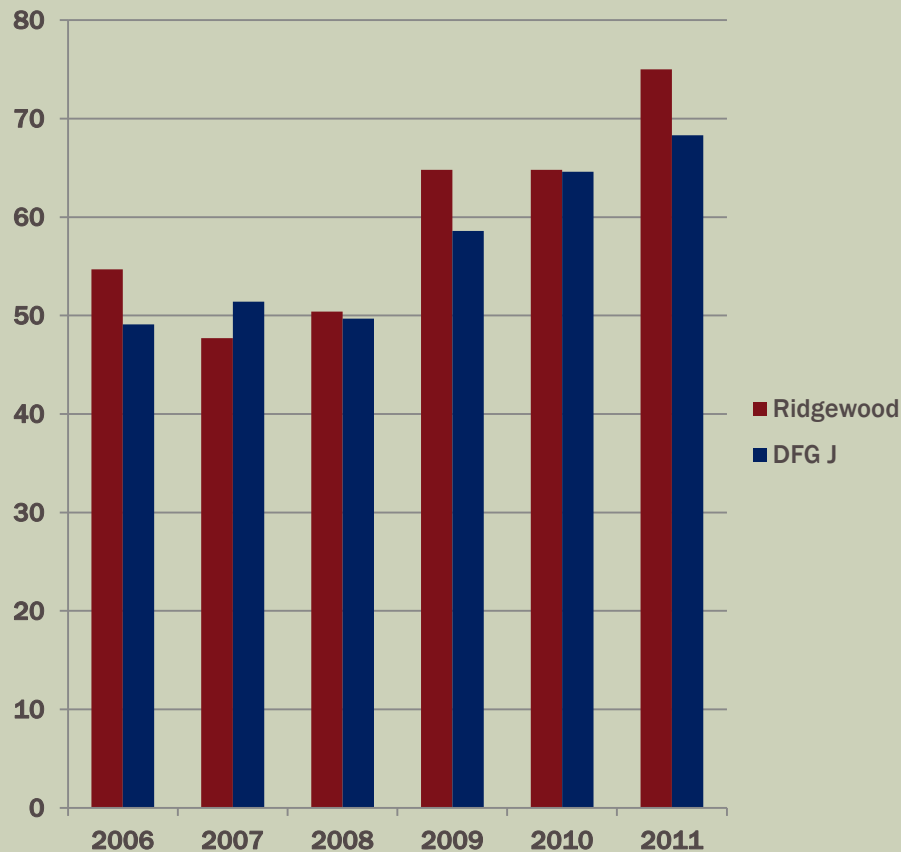


NJASK5

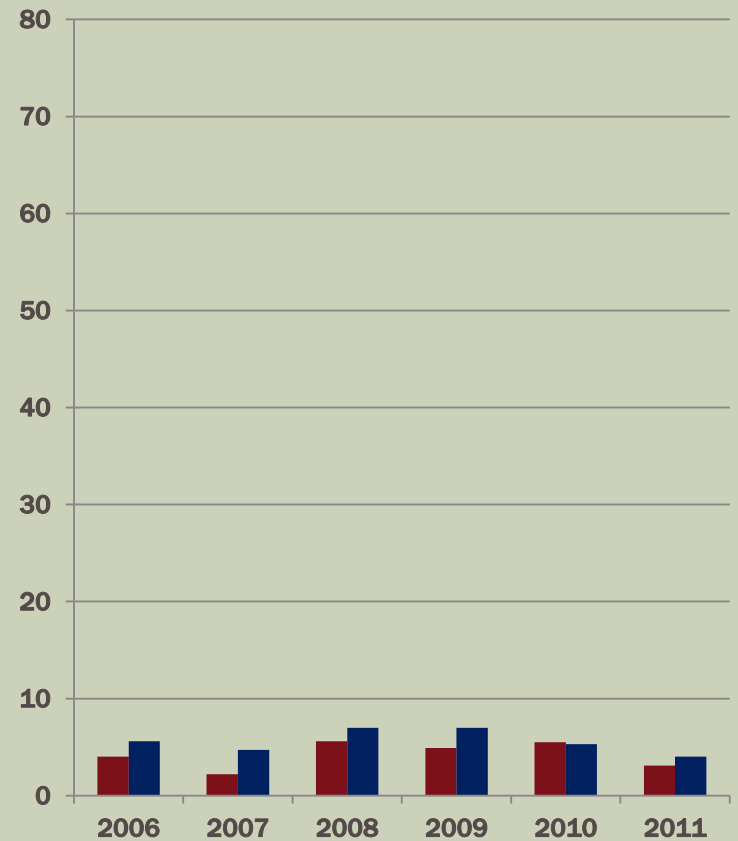
HISTORY OF COMPARABLE TESTS RELATIVE TO DFG J PERCENT OF ALL STUDENTS IN EACH PROFICIENCY LEVEL

Mathematics

Advanced Proficient



Partially Proficient



NJASK6

HISTORY RELATIVE TO DFG J

PERCENT OF ALL STUDENTS IN EACH PROFICIENCY LEVEL



	Language Arts Literacy				Mathematics		
	Advanced Proficient	Proficient	Partially Proficient		Advanced Proficient	Proficient	Partially Proficient
2011 NJASK6							
Ridgewood	16.4	73.3	10.2		55.8	40.0	4.2
DFG J	19.1	70.1	10.8		54.2	40.2	5.6
2010 NJASK6							
Ridgewood	18.4	71.3	10.2		50.2	42.7	7.1
DFG J	21.8	67.4	10.8		48.7	42.9	8.5
2009 NJASK6							
Ridgewood	14.4	75.9	9.7		46.8	46.3	6.9
DFG J	16.7	74.8	8.5		48.5	43.2	8.3
2008 NJASK6							
Ridgewood	4.6	78.2	17.2		39.3	55.5	5.3
DFG J	6.0	77.7	16.3		42.2	50.3	7.6
2007 NJASK6							
Ridgewood	25.1	67.8	7.1		35.2	58.2	6.6
DFG J	28.7	65.5	5.8		40.7	53.2	6.1
2006 NJASK6							
Ridgewood	16.4	73.6	10.0		38.2	54.6	7.2
DFG J	20.1	73.2	6.7		38.2	53.0	8.8

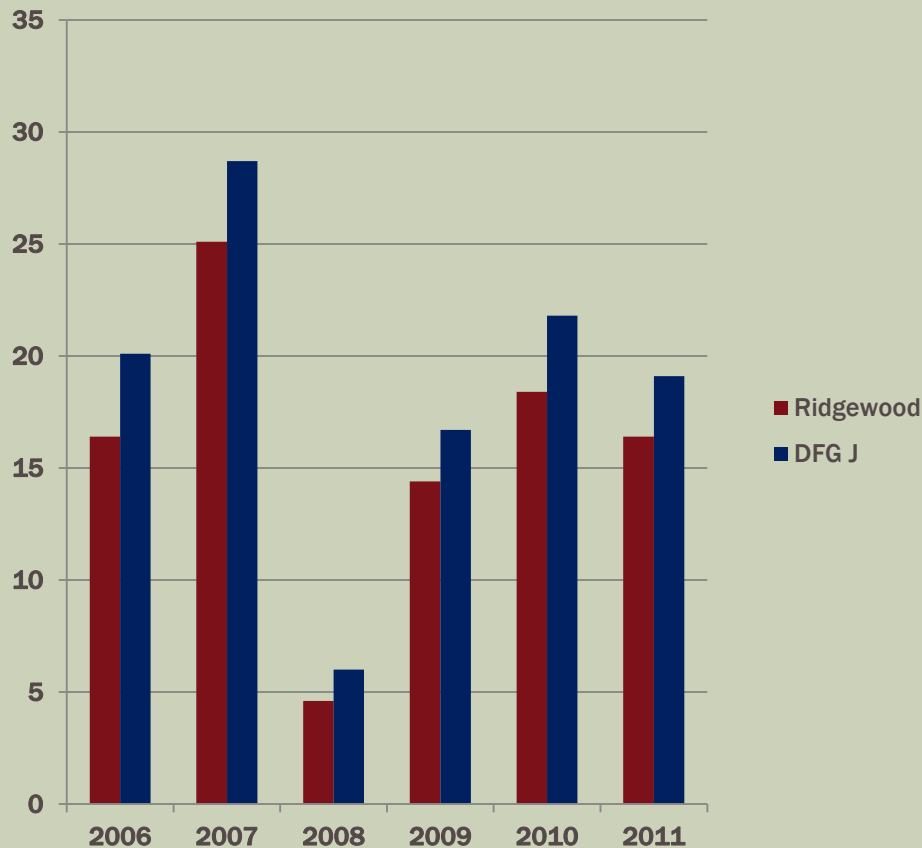
- *Bolded “Advanced Proficient” percentages are equal to or higher than DFG J.*
- *Bolded “Partially Proficient” percentages are equal to or lower than DFG J.*

NJASK6

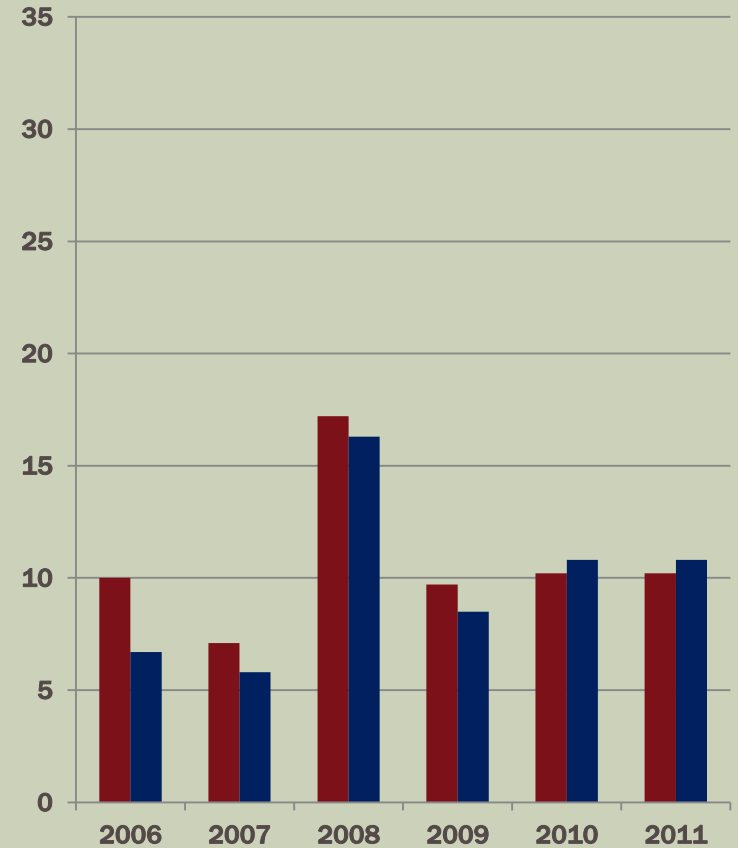
HISTORY OF COMPARABLE TESTS RELATIVE TO DFG J PERCENT OF ALL STUDENTS IN EACH PROFICIENCY LEVEL

Language Arts Literacy

Advanced Proficient



Partially Proficient

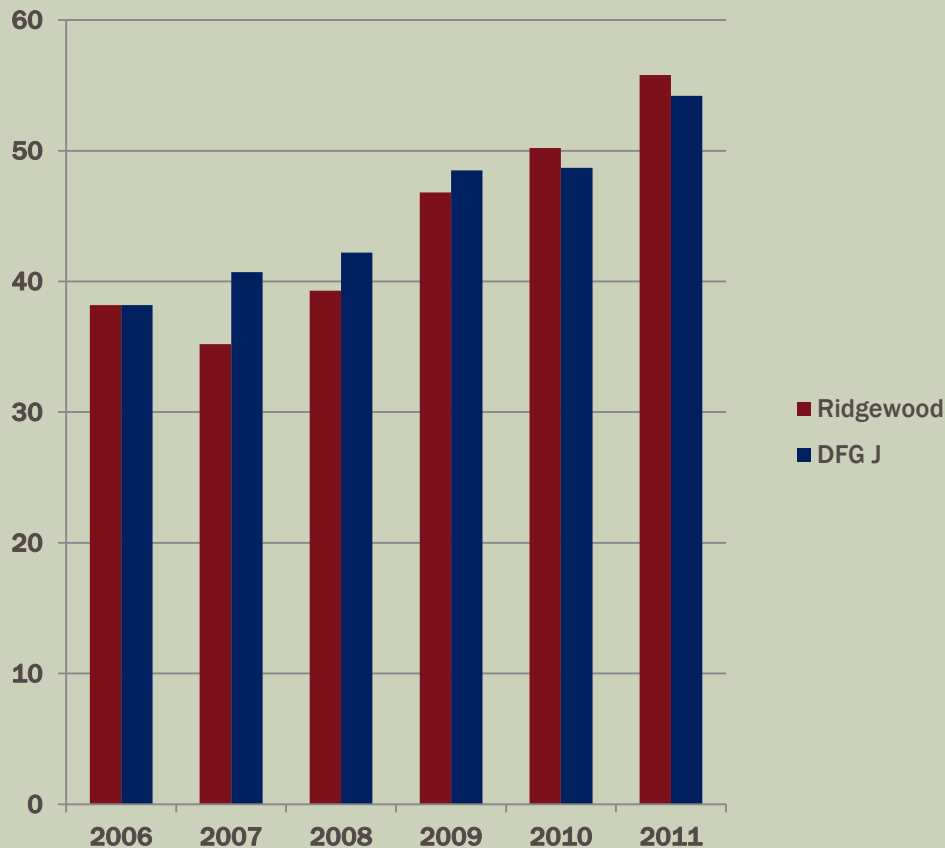


NJASK6

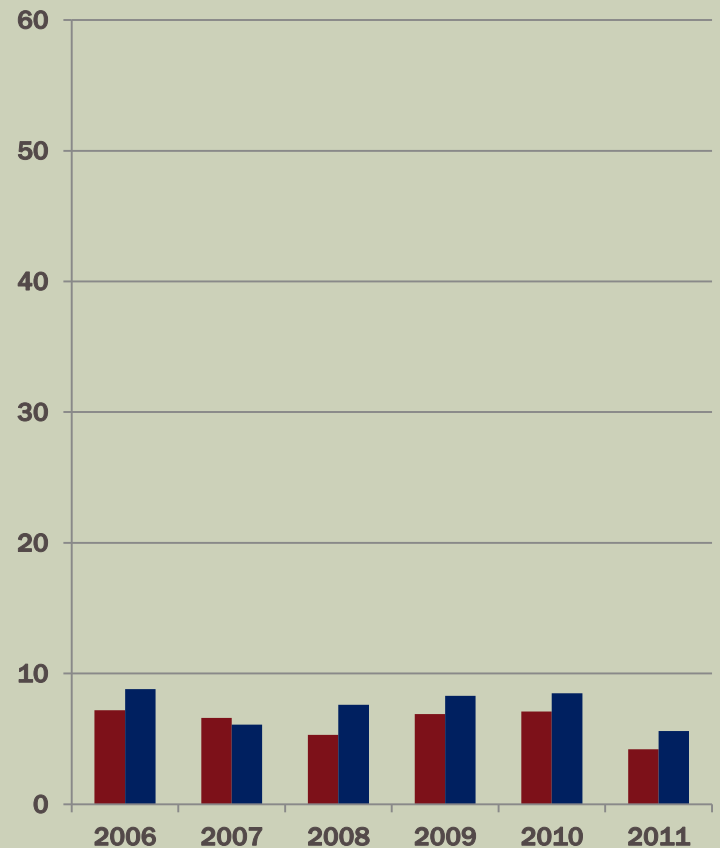
HISTORY OF COMPARABLE TESTS RELATIVE TO DFG J PERCENT OF ALL STUDENTS IN EACH PROFICIENCY LEVEL

Mathematics

Advanced Proficient



Partially Proficient



NJASK7

HISTORY RELATIVE TO DFG J

PERCENT OF ALL STUDENTS IN EACH PROFICIENCY LEVEL



	Language Arts Literacy				Mathematics		
	Advanced Proficient	Proficient	Partially Proficient		Advanced Proficient	Proficient	Partially Proficient
2011 NJASK7							
Ridgewood	27.1	62.8	10.1		49.3	41.0	9.7
DFG J	30.9	57.3	11.8		51.8	36.5	11.7
2010 NJASK7							
Ridgewood	31.2	59.3	9.5		44.5	42.1	13.3
DFG J	40.2	52.2	7.6		49.2	39.5	11.3
2009 NJASK7							
Ridgewood	41.4	52.9	5.6		49.8	40.8	9.4
DFG J	42.3	50.8	6.9		48.5	39.9	11.6
2008 NJASK7							
Ridgewood	28.7	61.5	9.9		34.6	48.1	17.3
DFG J	35.5	57.2	7.3		43.1	44.4	12.4
2007 NJASK7							
Ridgewood	22.6	70.8	6.6		25.7	60.8	13.6
DFG J	28.0	67.3	4.7		36.1	51.9	12.0
2006 NJASK7							
Ridgewood	20.0	76.7	3.3		33.1	56.3	10.6
DFG J	23.0	73.4	3.7		35.4	52.9	11.7

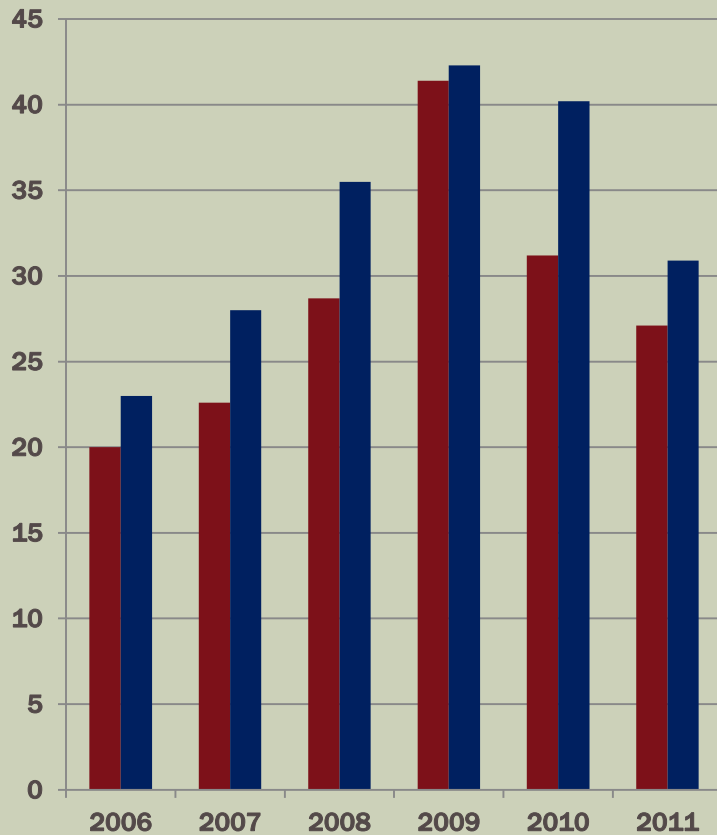
- **Bolded “Advanced Proficient” percentages are equal to or higher than DFG J.**
- **Bolded “Partially Proficient” percentages are equal to or lower than DFG J.**

NJASK7

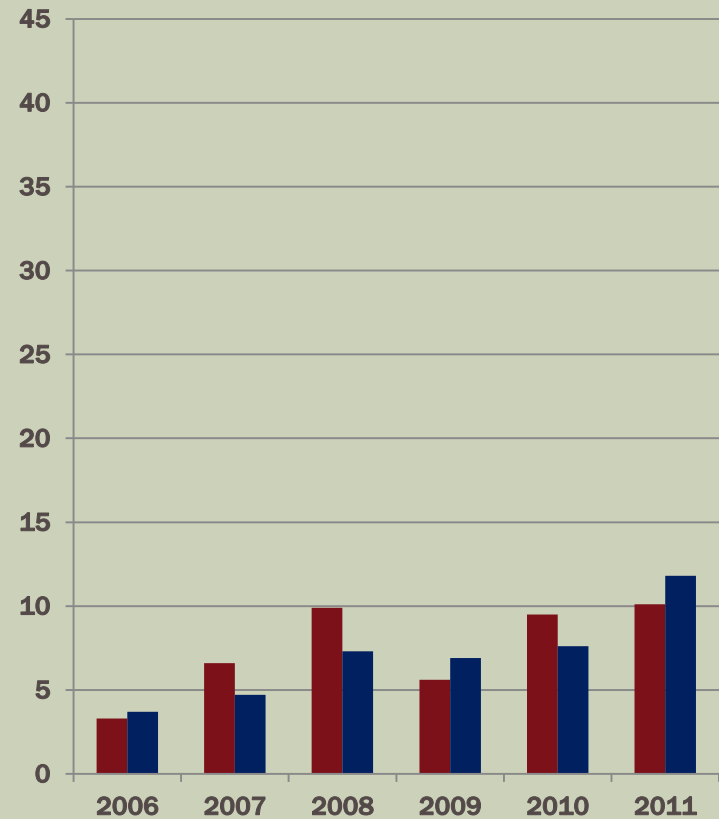
HISTORY OF COMPARABLE TESTS RELATIVE TO DFG J PERCENT OF ALL STUDENTS IN EACH PROFICIENCY LEVEL

Language Arts Literacy

Advanced Proficient



Partially Proficient

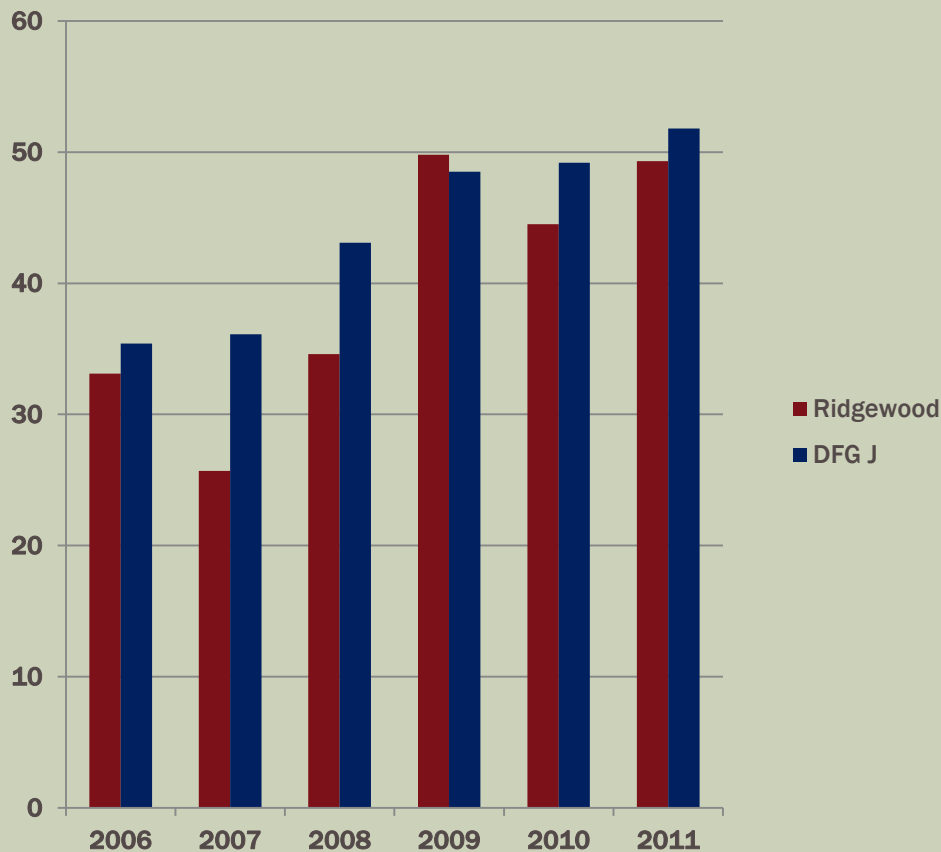


NJASK7

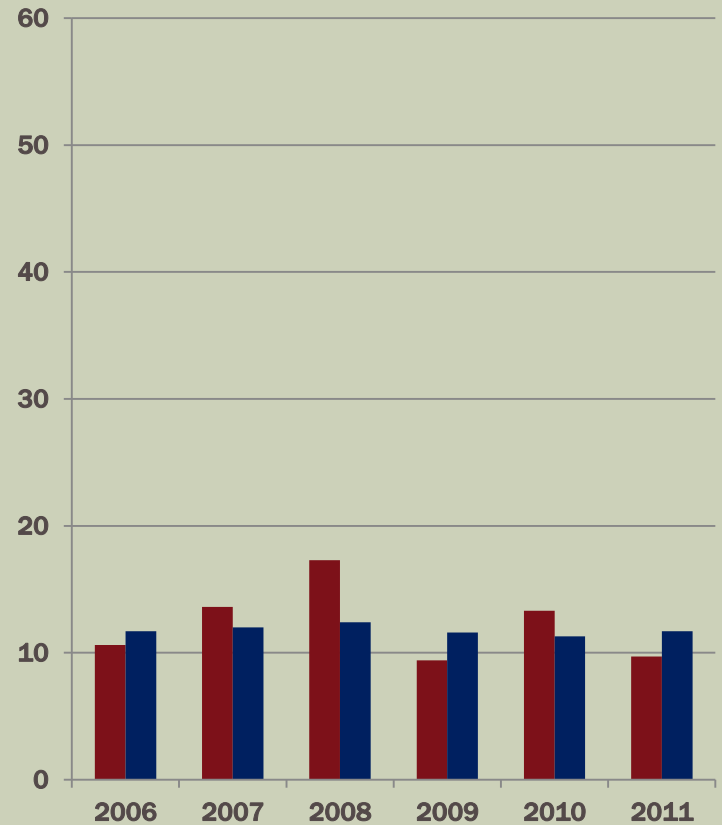
HISTORY OF COMPARABLE TESTS RELATIVE TO DFG J PERCENT OF ALL STUDENTS IN EACH PROFICIENCY LEVEL

Mathematics

Advanced Proficient



Partially Proficient



GEPA/NJASK8

HISTORY RELATIVE TO DFG J

PERCENT OF ALL STUDENTS IN EACH PROFICIENCY LEVEL



	Language Arts Literacy				Mathematics				Science		
	Advanced Proficient	Proficient	Partially Proficient		Advanced Proficient	Proficient	Partially Proficient		Advanced Proficient	Proficient	Partially Proficient
2011 NJASK8											
Ridgewood	36.3	59.8	4.0		54.7	35.8	9.5		50.4	45.2	4.4
DFG J	42.9	53.9	3.2		56.6	34.0	9.3		56.5	39.7	3.8
2010 NJASK8											
Ridgewood	39.7	54.1	6.1		50.2	38.7	11.0		58.4	37.3	4.3
DFG J	42.3	54.2	3.4		56.3	33.8	9.8		59.8	37.1	3.1
2009 NJASK8											
Ridgewood	21.1	73.5	5.5		54.2	34.6	11.2		55.1	43.2	1.6
DFG J	28.1	68.3	3.6		54.7	35.8	9.5		57.4	39.4	3.2
2008 NJASK8											
Ridgewood	19.9	74.9	5.3		43.7	44.2	12.1		49.2	46.3	4.5
DFG J	27.2	68.2	4.6		50.9	39.5	9.6		61.6	35.2	3.2
2007 GEPA											
Ridgewood	22.2	69.8	8.0		47.4	43.4	9.2		36.5	59.5	4.0
DFG J	27.8	66.5	5.7		49.2	42.5	8.3		51.6	45.3	3.1
2006 GEPA											
Ridgewood	21.2	72.6	6.2		44.2	47.3	8.6		33.4	62.4	4.2
DFG J	21.9	71.8	6.3		45.4	44.1	10.5		44.2	51.8	4.0
2005 GEPA											
Ridgewood	19.9	72.2	7.9		40.7	50.1	9.2		38.3	57.0	4.8
DFG J	20.5	72.6	6.9		42.8	46.7	10.5		49.0	46.6	4.5

- **Bolded “Advanced Proficient” percentages are equal to or higher than DFG J.**
- **Bolded “Partially Proficient” percentages are equal to or lower than DFG J.**

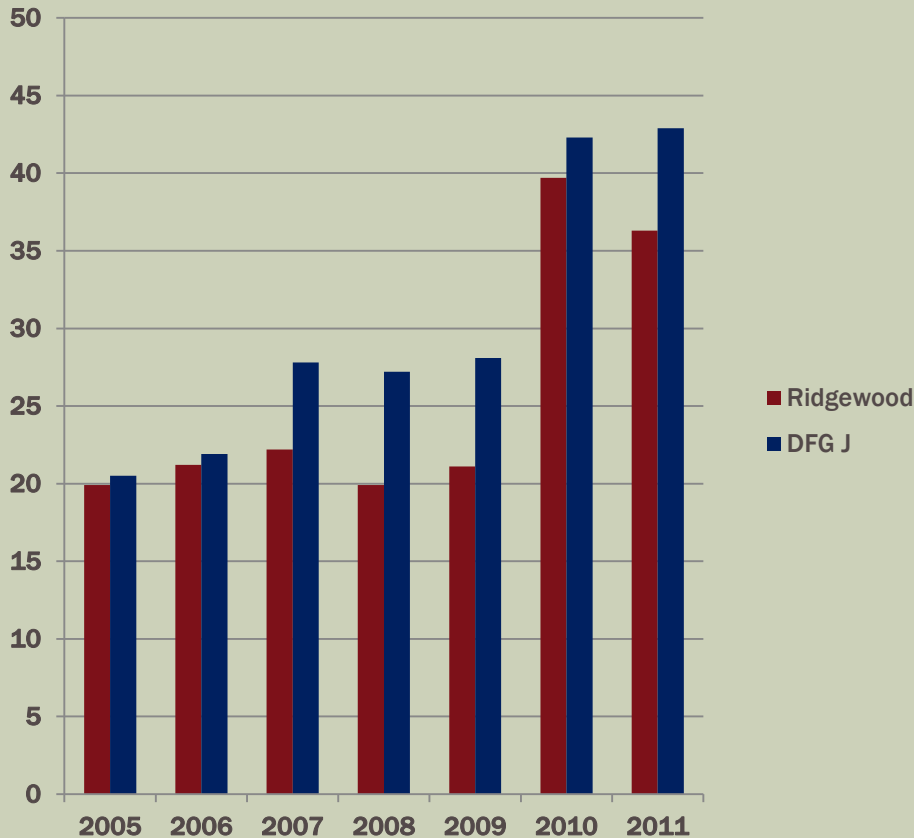
GEPA/NJASK8

HISTORY RELATIVE TO DFG J

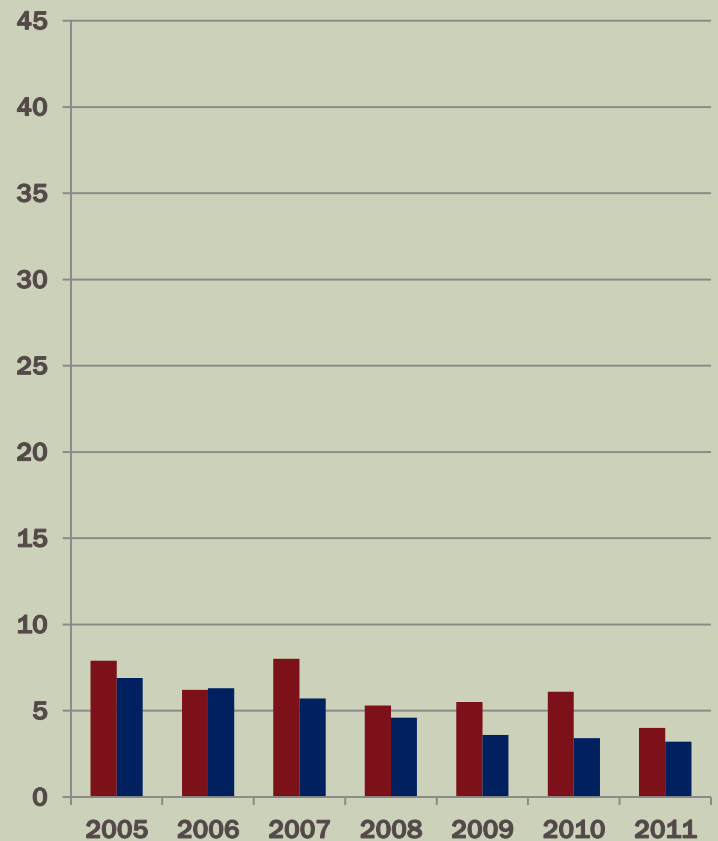
PERCENT OF ALL STUDENTS IN EACH PROFICIENCY LEVEL

Language Arts Literacy

Advanced Proficient



Partially Proficient



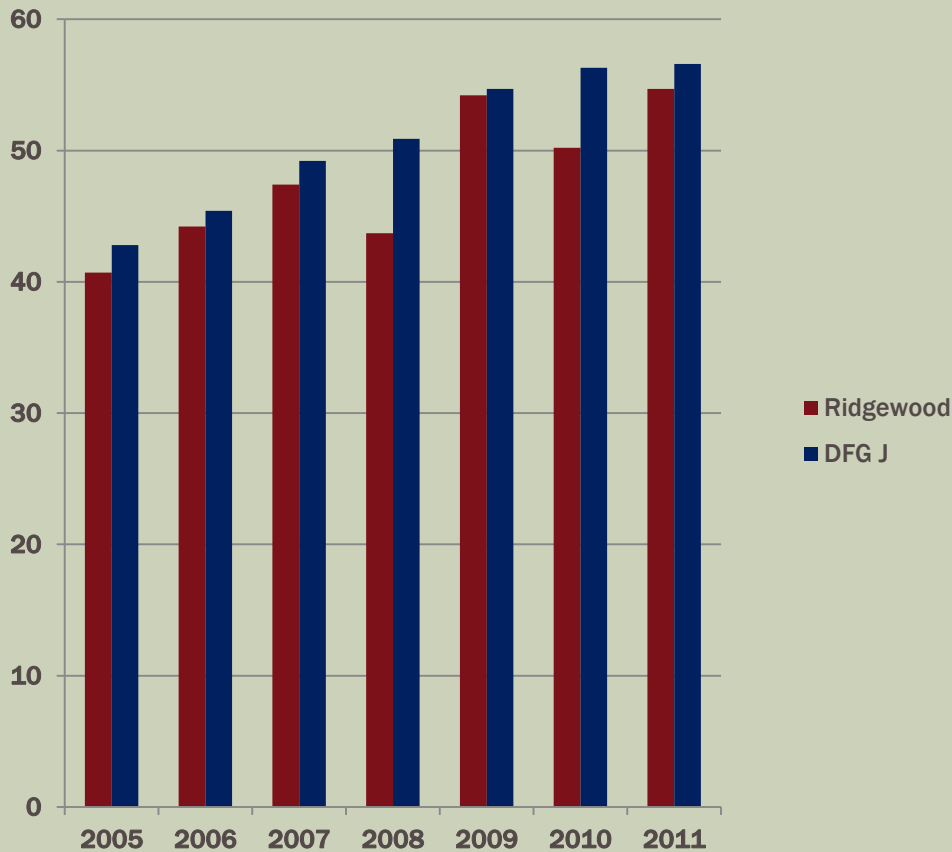
GEPA/NJASK8

HISTORY RELATIVE TO DFG J

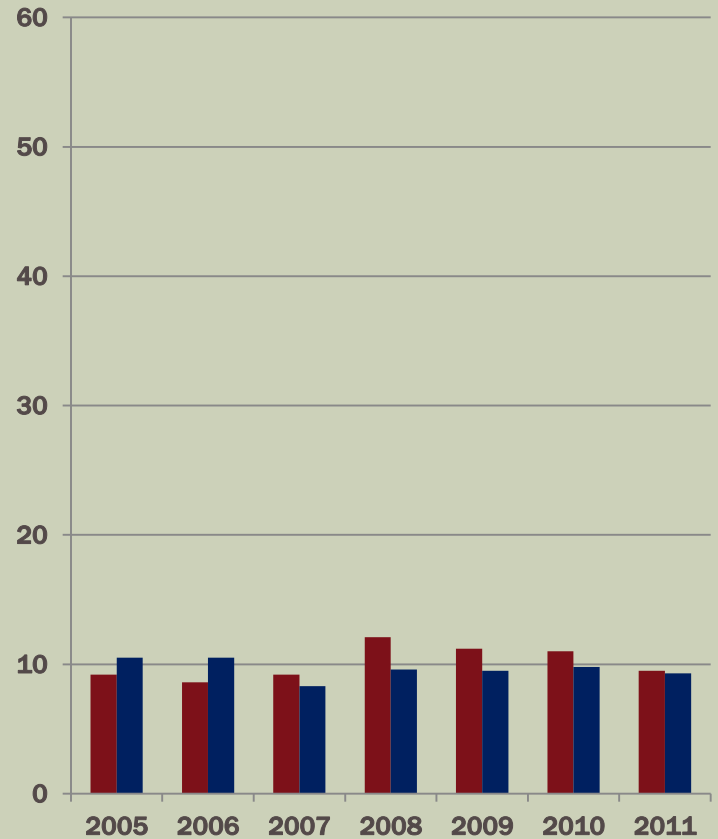
PERCENT OF ALL STUDENTS IN EACH PROFICIENCY LEVEL

Mathematics

Advanced Proficient



Partially Proficient



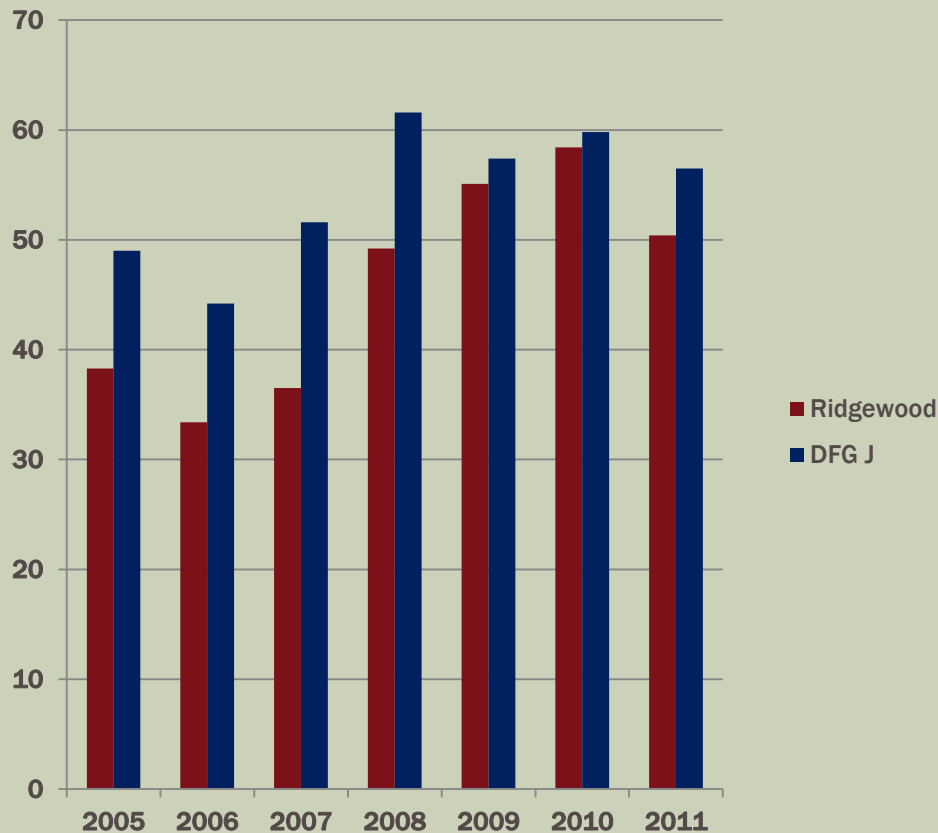
GEPA/NJASK8

HISTORY RELATIVE TO DFG J

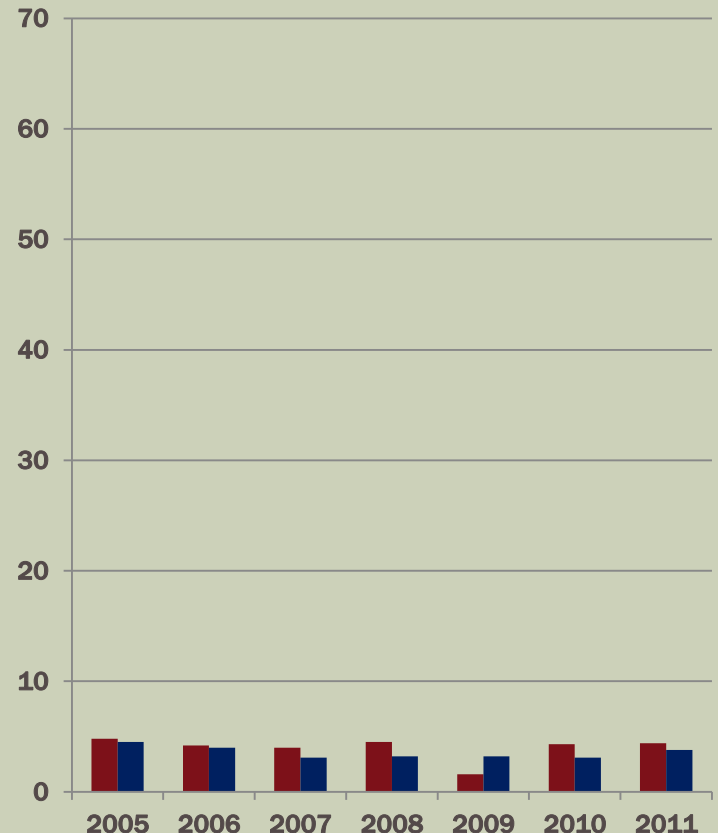
PERCENT OF ALL STUDENTS IN EACH PROFICIENCY LEVEL

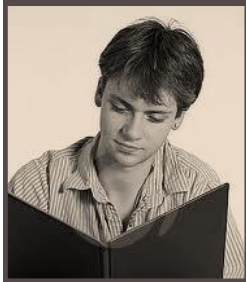
Science

Advanced Proficient



Partially Proficient





HSPA/NJBCT

HISTORY RELATIVE TO DFG J

PERCENT OF ALL STUDENTS IN EACH PROFICIENCY LEVEL



	Language Arts Literacy			Mathematics			Biology		
	Advanced Proficient	Proficient	Partially Proficient	Advanced Proficient	Proficient	Partially Proficient	Advanced Proficient	Proficient	Partially Proficient
2011									
Ridgewood	40.8	55.7	3.5	56.0	38.6	5.5	38.2	49.9	11.9
DFG J	46.1	51.7	2.3	56.9	36.6	6.5	49.7	38.9	11.4
2010									
Ridgewood	41.8	54.2	4.0	58.2	36.2	5.6	38.2	49.9	11.9
DFG J	43.2	54.4	2.4	57.6	37.1	5.3	40.4	47.4	12.2
2009									
Ridgewood	30.7	66.5	2.8	56.6	38.3	5.2			
DFG J	29.5	66.5	4.0	54.2	38.1	7.7			
2008									
Ridgewood	29.5	67.7	2.8	57.3	38.0	4.7			
DFG J	27.2	68.9	4.0	55.3	38.4	6.3			
2007									
Ridgewood	40.8	55.9	3.3	58.7	35.8	5.5			
DFG J	42.0	55.4	2.6	53.0	40.8	6.1			
2006									
Ridgewood	48.3	48.3	3.4	62.8	33.3	3.9			
DFG J	48.1	48.9	3.0	57.6	37.0	5.4			
2005									
Ridgewood	39.2	55.9	5.0	56.3	37.5	6.3			
DFG J	42.2	54.3	3.5	58.2	36.0	5.9			

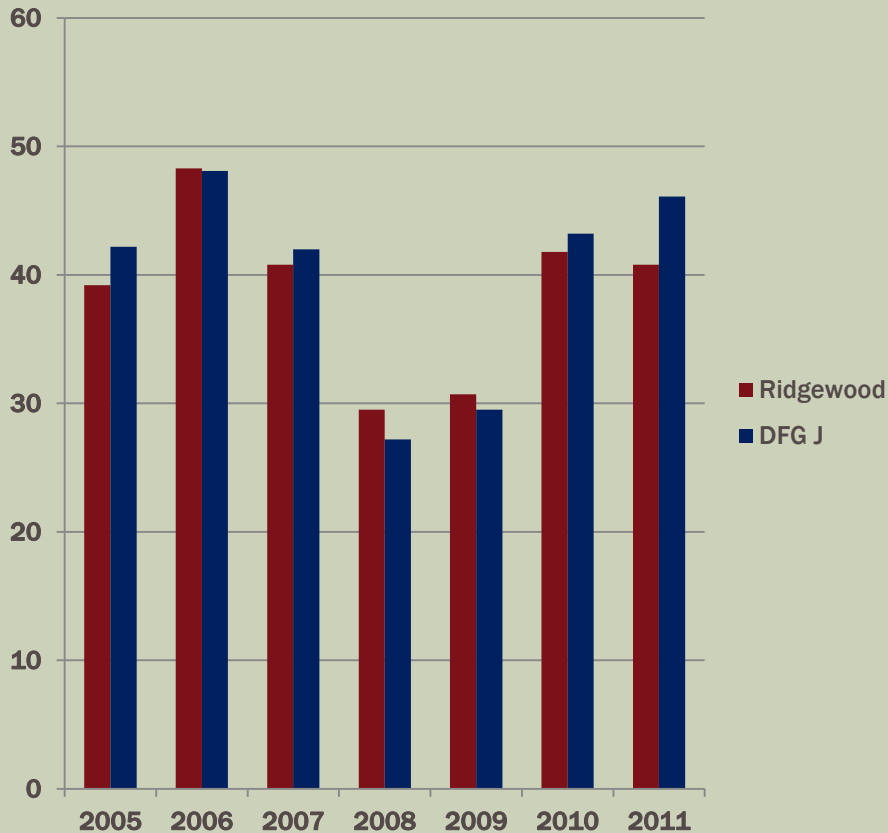
- *Bolded "Advanced Proficient" percentages are equal to or higher than DFG J.*
- *Bolded "Partially Proficient" percentages are equal to or lower than DFG J.*

HSPA

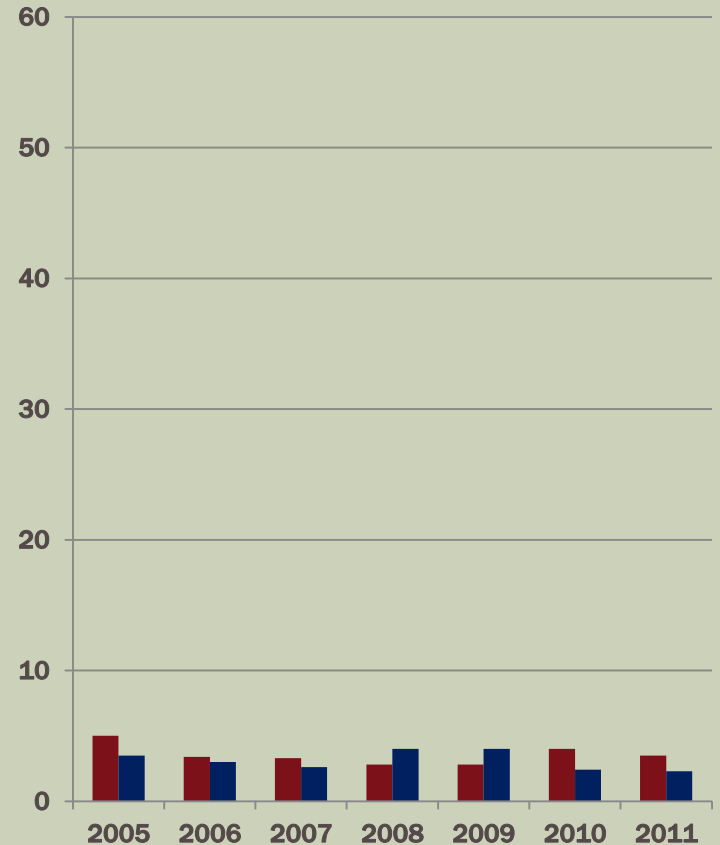
HISTORY RELATIVE TO DFG J PERCENT OF ALL STUDENTS IN EACH PROFICIENCY LEVEL

Language Arts Literacy

Advanced Proficient



Partially Proficient



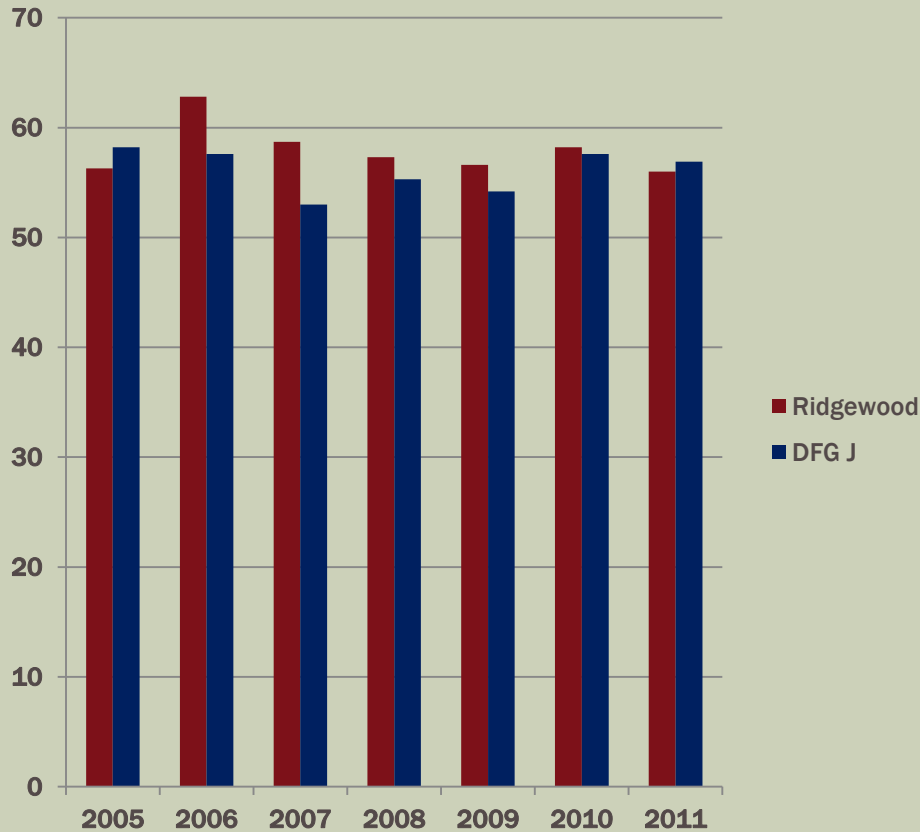
HSPA

HISTORY RELATIVE TO DFG J

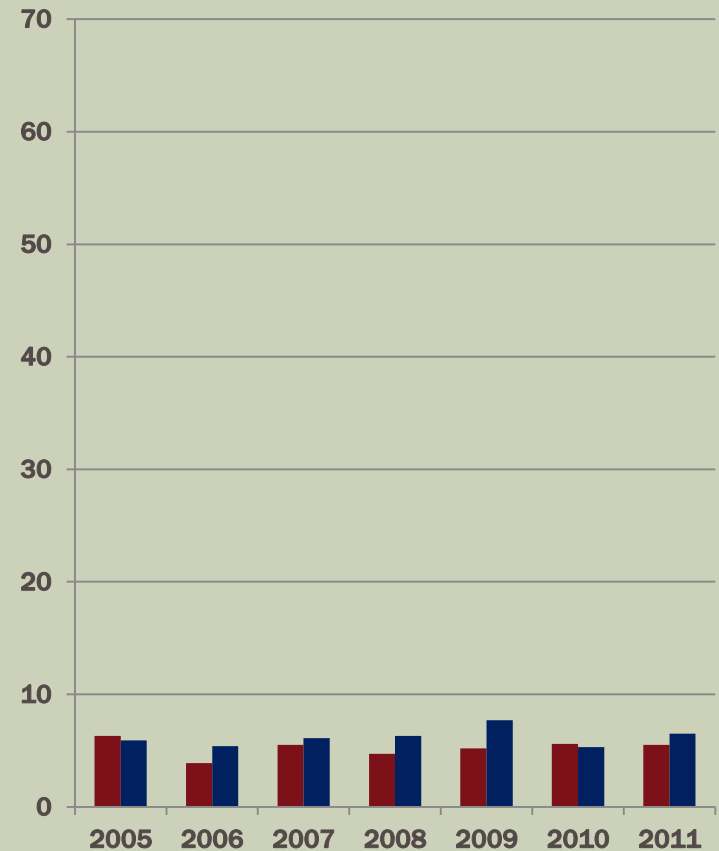
PERCENT OF ALL STUDENTS IN EACH PROFICIENCY LEVEL

Mathematics

Advanced Proficient



Partially Proficient



NJBCT (NEW JERSEY BIOLOGY COMPETENCY TEST)

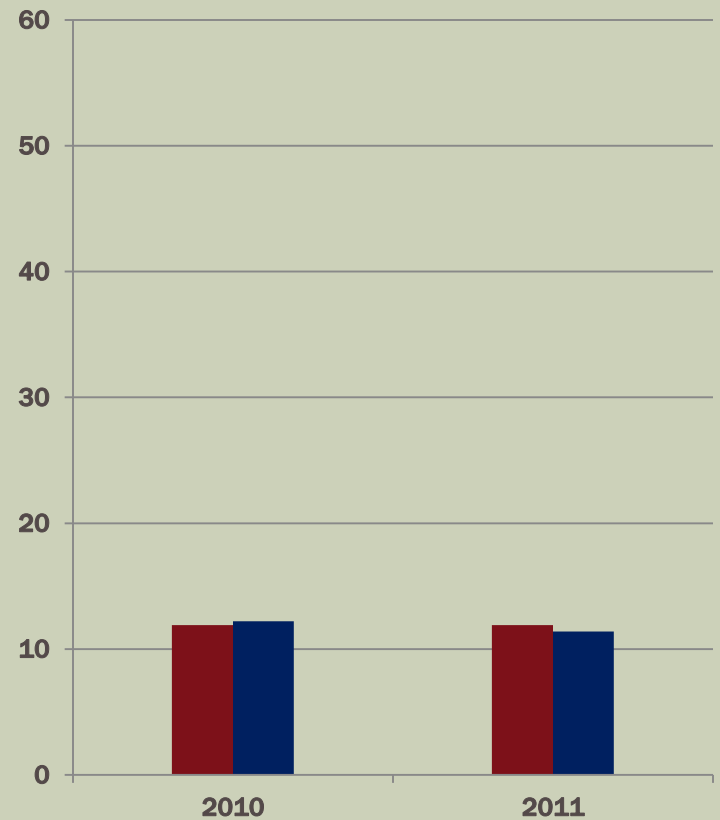
HISTORY RELATIVE TO DFG J

PERCENT OF ALL STUDENTS IN EACH PROFICIENCY LEVEL

Advanced Proficient



Partially Proficient



THE FINAL QUESTION: WHAT ARE WE DOING BASED ON THE DATA?

- All schools set student achievement goals.
- Professional development supports student achievement goals.
- Last year, 27 of 28 goals were within 1 percentage point of being met. *Click here to read the report.*

**New this year:
Ridgewood Public Schools
participating in
professional development
partnership with
Montclair State University
Network for Educational Renewal**

