



# RIDGEWOOD

---

## PUBLIC SCHOOLS

*“Not everything that counts can  
be measured.  
Not everything that can be  
measured counts.”*

*Albert Einstein*



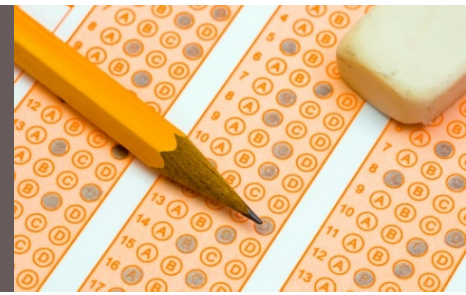
## District-Wide State Testing Report For Science 2014 - 2015

Cheryl Best

Assistant Superintendent for Curriculum, Instruction and Assessment

October 19, 2015

# STATE TESTING 2015



- Criterion-referenced tests required by the State administered in Spring, 2015
  - Grade 4 and 8: *NJASK* in Science
  - End of Course: *NJBCT* New Jersey Biology Competency Test. Postponed as a graduation requirement
- Percent Passing = Percent Advanced Proficient + Percent Proficient

# DISTRICT FACTOR GROUP INFORMATION



- Our DFG changed from I to J in 2005, based on 2000 census data.
- The DFG is based on population density, the percent of individuals in poverty, as well as residents' education level, occupational status, unemployment rate, and median family income.
- New Jersey has 25 J districts.
- Other J districts: Glen Rock, HoHoKus, Northern Highlands, Saddle River, Upper Saddle River, Woodcliff Lake, Millburn, West Windsor-Plainsboro, Rumson, Chatham, Mountain Lakes.
- Ridgewood is the second largest J district in New Jersey.

Most informative comparison is to District Factor Group results.  
NJDOE also requires comparison to state results.

# TWO ESSENTIAL QUESTIONS

- How did we do relative to our comparison group?
- How are we doing over time in snapshots of data?



# SCIENCE

## HISTORY RELATIVE TO DFG AND STATE

### PERCENT OF ALL STUDENTS IN EACH PROFICIENCY LEVEL



	NJASK4 Science			NJASK8 Science			NJ Biology Competency Test		
	Advanced Proficient	Proficient	Partially Proficient	Advanced Proficient	Proficient	Partially Proficient	Advanced Proficient	Proficient	Partially Proficient
<b>2015</b>									
Ridgewood	<b>77.1</b>	21.3	<b>1.6</b>	33.0	60.5	6.5	<b>40.0</b>	51.2	<b>8.9</b>
DFG J	73.6	24.3	2.0	41.1	53.0	5.9	35.7	52.2	12.2
State	47.2	43.4	9.4	19.3	57.7	23.0	13.0	44.8	42.2
<b>2014</b>									
Ridgewood	<b>75.7</b>	22.0	2.3	37.8	56.5	5.6	<b>48.8</b>	44.7	<b>6.6</b>
DFG J	74.3	23.5	2.1	55.8	40.2	4.0	42.4	44.5	13.1
State	47.5	41.1	11.5	27.1	51.8	21.0	17.1	43.2	39.7
<b>2013</b>									
Ridgewood	66.2	31.3	2.5	54.3	41.9	<b>3.8</b>	<b>50.9</b>	41.1	<b>8.0</b>
DFG J	68.2	29.8	2.1	62.5	33.3	4.2	43.3	45.0	11.7
State	44.1	45.4	10.5	32.6	46.4	21.0	17.3	41.1	41.6
<b>2012</b>									
Ridgewood	<b>69.2</b>	29.0	1.9	54.9	40.4	4.7	37.4	55.1	<b>7.5</b>
DFG J	68.4	29.9	1.7	61.5	34.8	3.8	37.6	50.0	12.5
State	44.6	46.7	8.7	32.4	49.5	18.1	14.4	44.8	40.8
<b>2011</b>									
Ridgewood	<b>71.7</b>	26.7	<b>1.6</b>	50.4	45.2	4.4	<b>52.3</b>	40.8	<b>6.9</b>
DFG J	70.2	27.6	2.2	56.5	39.7	3.8	49.7	38.9	11.4
State	47.7	42.3	10.0	29.3	51.9	18.8	19.3	38.0	42.7

- *Bolded "Advanced Proficient" percentages are equal to or higher than DFG J.*
- *Bolded "Partially Proficient" percentages are equal to or lower than DFG J.*

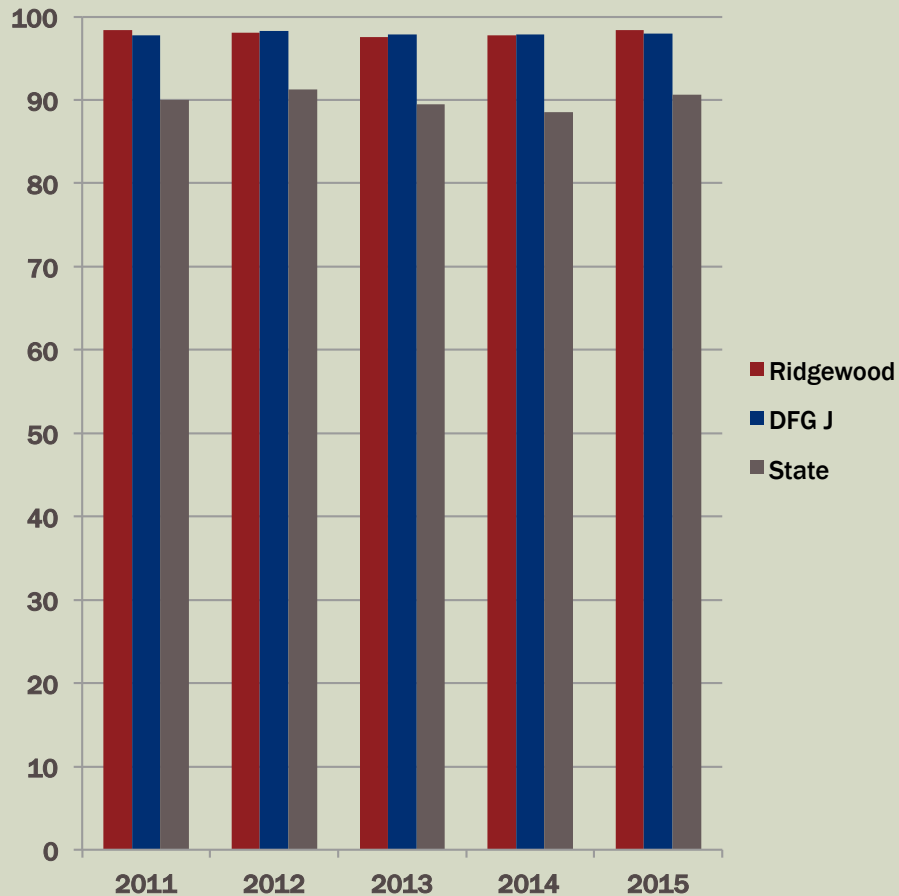
# NJASK SCIENCE

## HISTORY RELATIVE TO DFG J AND STATE

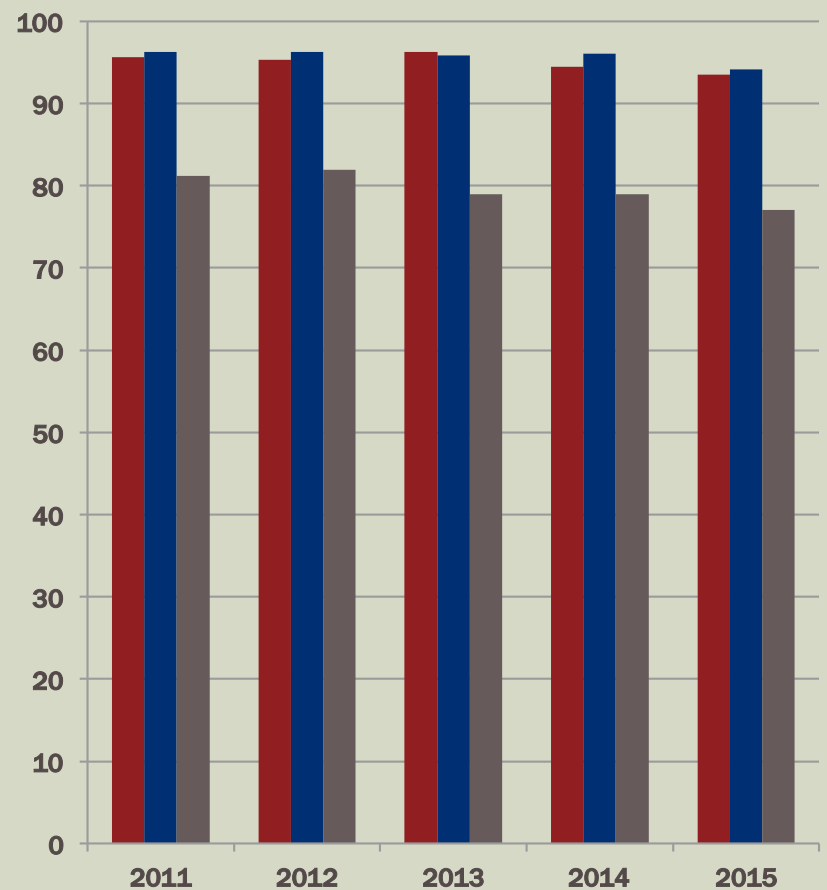
### ALL STUDENTS

#### Percent Passing

#### Grade 4



#### Grade 8



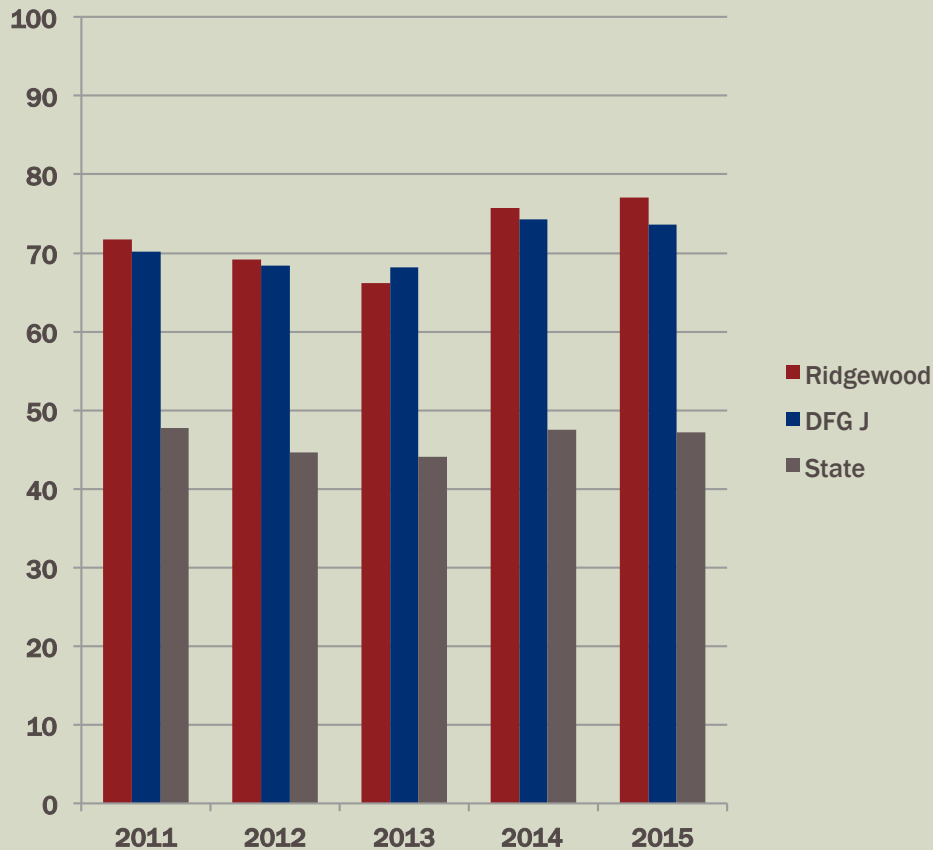
# ***NJASK SCIENCE***

## **HISTORY RELATIVE TO DFG J AND STATE**

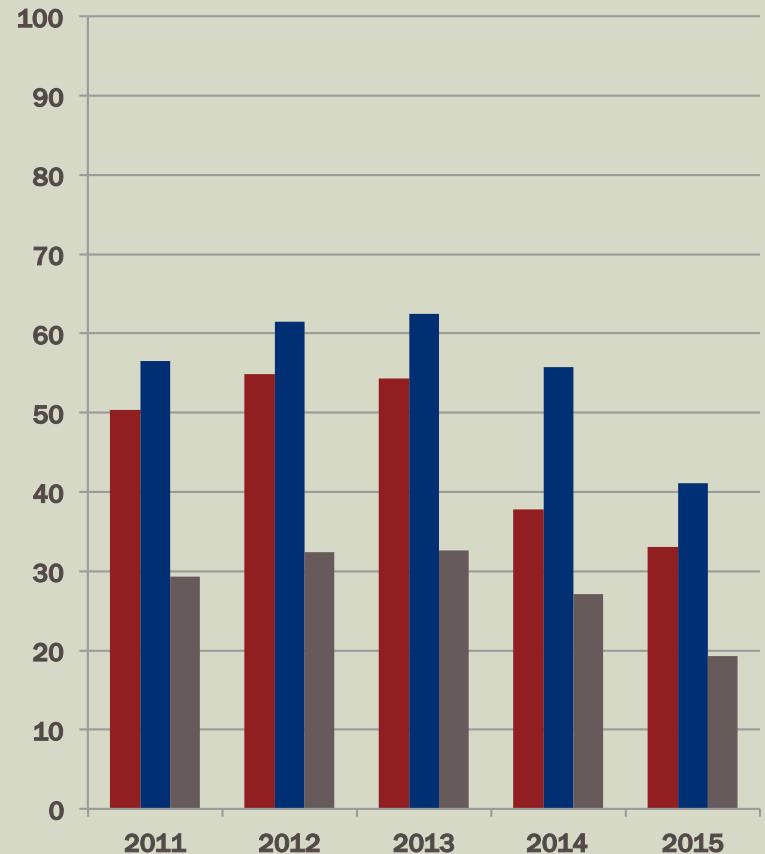
### **ALL STUDENTS**

### **Percent Advanced Proficient**

#### **Grade 4**



#### **Grade 8**

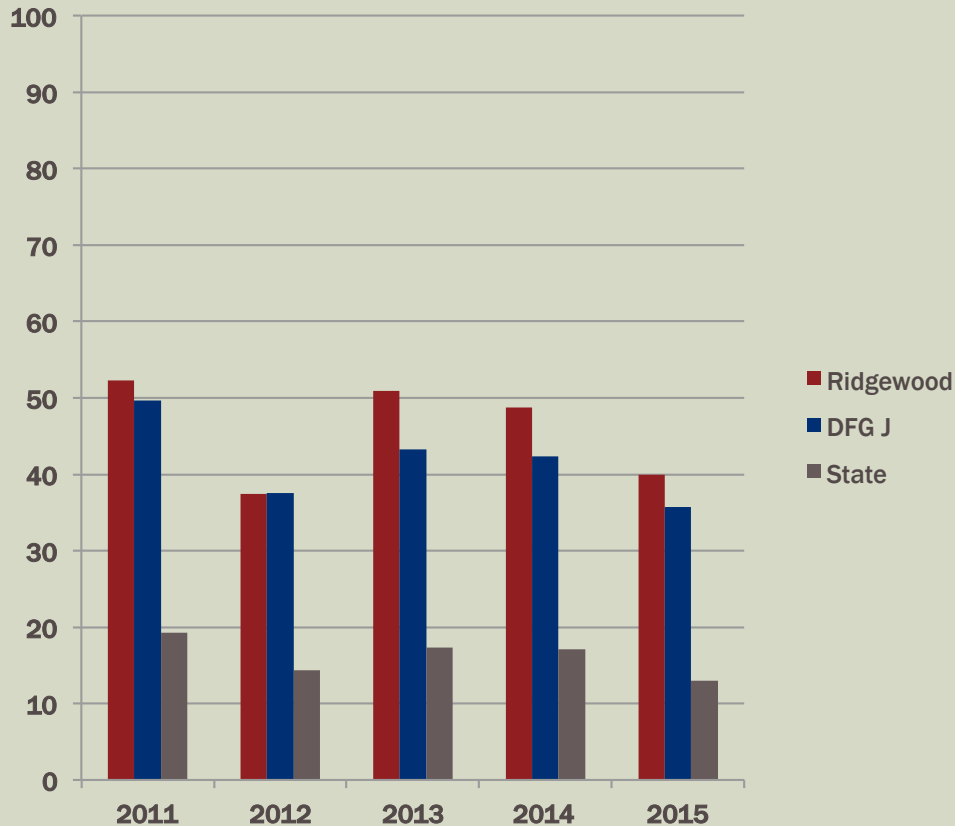


# ***NJBCT (NEW JERSEY BIOLOGY COMPETENCY TEST)***

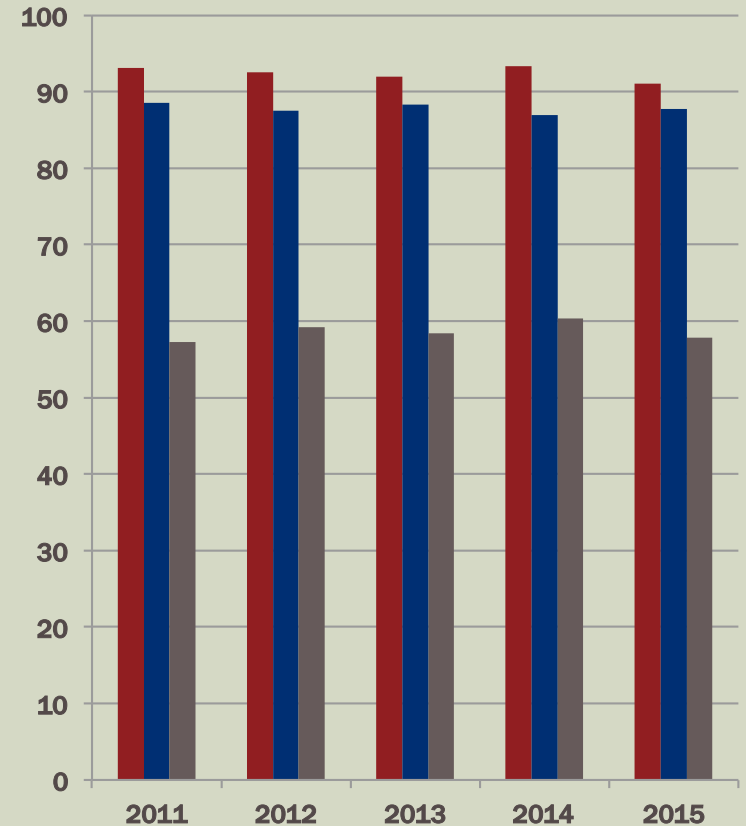
## **HISTORY RELATIVE TO DFG J AND STATE**

### **PERCENT OF ALL STUDENTS IN EACH PROFICIENCY LEVEL**

### **Advanced Proficient**



### **Passing**





# PREPARING FOR NEW STANDARDS



- Next Generation Science Standards (NGSS): presentation on new standards will be given at next Board meeting
- NGSS Implementation timeline is subject to change.
- In 2015-2016 students in grades 4 and 8 will again be required to take the NJASK Science. Students taking a Biology course will take the NJBCT